

Cities in Evolution. Diachronic Transformations of Urban and Rural Settlements, II

VIII AACCP Symposium, Proceedings

Edited by Z. Ceylanlı, P. Günay and E. Çiçek

Cities in Evolution. Diachronic Transformations of Urban and Rural Settlements, Proceedings of the VIII AACCP symposium, Özyeğin University, Istanbul 2021, Volume II, Edited by Zeynep Ceylanlı, Pelin Günay and Ezgi Çiçek, DRUM Press, Istanbul, 2023, Printed by Lulu.com, Raleigh, NC, USA
ISBN: 978-1-4478-0517-5

Dynamic Research on Urban Morphology Books, 4
Book series directed by Alessandro Camiz
<http://labs.ozyegin.edu.tr/drum/books/>
Copyright © 2023 Alessandro Camiz

All the papers in this volume were double peer-reviewed by the symposium's scientific committee.

The editors of this volume decline all responsibilities for the images published in this volume, the authors are responsible for the images provided in their paper.

AACCP (Architecture, Archaeology and Contemporary City Planning)

General coordinators:

Per Elias Cornell, University of Gothenburg, Sweden

Giorgio Verdiani, University of Florence, Italy

Liisa Seppänen, University of Turku, Finland

Özyeğin University, Faculty of Architecture and Design, Dynamic Research on Urban Morphology-DRUM laboratory
Diachronic transformations of the built environment
<https://labs.ozyegin.edu.tr/drum>



**CITIES IN EVOLUTION
DIACHRONIC TRANSFORMATIONS OF URBAN AND RURAL
SETTLEMENTS
Proceedings Volume II**

VIII AACCP (Architecture, Archaeology and Contemporary City Planning)
symposium, Istanbul 2021

Edited by

Zeynep Ceylanlı, Pelin Günay and Ezgi Çiçek

DRUM Press
Istanbul, 2023

**CITIES IN EVOLUTION
DIACHRONIC TRANSFORMATIONS OF URBAN AND RURAL SETTLEMENTS
Proceedings, Volume II**

VIII AACCP (Architecture, Archaeology and Contemporary City Planning) symposium, Özyeğin University, Istanbul, April 26th May 2nd 26 2021

Edited by:

Zeynep Ceylanlı, Pelin Günay and Ezgi Çiçek

DRUM Press, Istanbul, 2023

ISBN: 978-1-4478-0517-5

Printed by Lulu.com, Raleigh, NC, USA

Dynamic Research on Urban Morphology books, 4

Book series directed by Alessandro Camiz

<http://labs.ozyegin.edu.tr/drum/books/>

Copyright © 2023 Alessandro Camiz

All the papers in this volume were double peer-reviewed by the symposium's scientific committee. The editors of this volume decline all the responsibilities for the images published in this volume, the authors are responsible for the images provided in their paper.

AACCP (Architecture, Archaeology and Contemporary City Planning)

General coordinators:

Per Elias Cornell, University of Gothenburg, Sweden

Giorgio Verdiani, University of Florence, Italy

Liisa Seppänen, University of Turku, Finland

Özyeğin University, Faculty of Architecture and Design, Dynamic Research on Urban Morphology-
DRUM laboratory, Diachronic transformations of the built environment

<https://labs.ozyegin.edu.tr/drum>



VIII AACCP (Architecture, Archaeology and Contemporary City Planning) Symposium CITIES IN EVOLUTION. DIACHRONIC TRANSFORMATIONS OF URBAN AND RURAL SETTLEMENTS

Organized by the Dynamic Research on Urban Morphology-DRUM laboratory, Özyeğin University, Istanbul, Turkey, April 26th-May 2nd, 2021

With the patronage of:

Embassy of Italy in Turkey
International Council on Monuments and Sites,
ICOMOS TÜRKİYE
International Council on Monuments and Sites,
Consiglio Nazionale Italiano dei Monumenti e dei Siti
"Storia della città", Centro internazionale di studi per la storia della città, fonti d'archivio e patrimonio architettonico-ambientale
Cyprus Network of Urban Morphology (CyNUM)
Vlahsaray Panagia (Paramythia) Greek Orthodox Church Foundation in Fener
Comitato scientifico ICOMOS Italia sulle città e villaggi storici (CIVVIH)
Le Cordon Bleu, Istanbul

In collaboration with:

After the Damages International Academy, Italy

General coordinators of AACCP:

Per Elias Cornell, University of Gothenburg, Sweden
Giorgio Verdiani, University of Florence, Italy
Liisa Seppänen, University of Turku, Finland

Symposium chairs:

Alessandro Camiz, Özyeğin University, Turkey
Zeynep Ceylanlı, Özyeğin University, Turkey

Organising committee:

Zeren Önsel Atala, Özyeğin University, Turkey
Federica Maietti, University of Ferrara, After the Damages International Academy, Italy
Manlio Montuori, University of Ferrara, After the Damages International Academy, Italy
Fabiana Raco, University of Ferrara, After the Damages International Academy, Italy
Claudia Pescosolido, University of Ferrara, After the Damages International Academy, Italy
Ezgi Çiçek, Özyeğin University, Turkey
Pelin Günay, Özyeğin University, Turkey
Özge Özkuvancı, Özyeğin University, Turkey
Pelin Arslan, Özyeğin University, Turkey
Louai Al Hussein, Özyeğin University, Turkey

Sponsors:

Pekerler İnşaat
<http://www.pekerler.com.tr/tr/>
Trakya Grup Cam San. Tic. Ltd. Şti.
<https://trakyagrup.com.tr/>
Litech Engineering, Tic. Ltd. Şti
<http://www.litech.com.tr>

Contacts:

Email: aaccp.2021@gmail.com
Web: <https://aaccp2021.wordpress.com>
Hashtag for social networks: #aaccp2021
<https://www.facebook.com/aaccp21>

Scientific committee:

Alessandra Ricci, Koç University, Turkey
Brenda Scheer, University of Utah, USA
Marco Giorgio Bevilacqua, Università di Pisa, Italy
Mosè Ricci, University of Trento, Italy
Antonio Pietro Latini, Jiangsu University, PRC
Andreas Georgopoulos, National Technical University of Athens, NTUA, Greece
Pablo Rodríguez-Navarro, Univesitat Politècnica de València, Spain
Wowo Ding, Nanjing University, PRC
Livia Bevilacqua, "Sapienza", University of Rome, Italy
Latife Summerer, ARUCAD – Arkin University of Creative Arts and Design, Cyprus
Luca Zavagno, Bilkent University, Turkey
Müge Şevketoğlu, Cyprus International University, Cyprus
Marcello Balzani, Università degli Studi di Ferrara, Italy
Marko Rukavina, University of Zagreb, Croatia
Teresa Colletta, University of Studies of Naples "Federico II", Italy
Elena Konstantinidou, National Technical University of Athens, NTUA, Greece
Nicola Marzot, Università degli Studi di Ferrara, Italy
Banu Manav, Kadir Has University, Turkey
Marco Trisciuglio, Politecnico di Torino, Italy
Ivor Samuels, University of Birmingham, UK
Paolo Carafa, "Sapienza", University of Rome, Italy

- Antonella Greco, "Sapienza", University of Rome, Italy
- Anna Wyn-Jones Frank, Tengbom Architects, Sweden
- Orazio Carpenzano, "Sapienza", University of Rome, Italy
- Ruxandra-Iulia Stoica, The University of Edinburgh, UK
- Tolga Ünlü, Çukurova University, Turkey
- Massimo Angrilli, Università degli Studi G. d'Annunzio Chieti-Pescara, Italy
- Olimpia Niglio, Hokkaido University, Japan
- Matt Bell, University of Maryland, USA
- Giovanni Fusco, Université Côte d'Azur, France
- Martin Ebert, Norwegian University of Life Sciences, Norway
- Mauro Volpiano, Politecnico di Torino, Italy
- Sofie Kirt Strandbygaard, Technical University of Denmark, Denmark
- Gaetano Ginex, Mediterranean University of Reggio Calabria, Italy
- Michael Barke, Northumbria University, Newcastle upon Tyne, UK
- Anna Irene Del Monaco, "Sapienza", University of Rome, Italy
- Emma Harutyunyan, National University of Architecture and Construction of Armenia, Armenia
- Jan Gadeyne, Temple University Rome, Italy
- Per Elias Cornell, University of Gothenburg, Sweden
- Giorgio Verdiani, University of Florence, Italy
- Liisa Seppänen, University of Turku, Finland
- Orhan Hacıhasanoğlu, Özyeğin University, Turkey
- Sinan Burat, Mersin University, Turkey
- Florian Nepravishhta, Polytechnic University of Tirana, Albania
- Alessandra Capuano, "Sapienza", University of Rome, Italy
- Alper Ünlü, Özyeğin University, Turkey
- Raimundo Bambó, Universidad de Zaragoza, Spain
- Burak Asiliskender, Abdullah Gul University, Turkey
- Mirjana Roter-Blagojevic, University of Belgrade, Serbia
- Małgorzata Hanzl, Lodz University of Technology, Poland
- Roberta Spallone, Politecnico di Torino, Italy
- Ornella Iuorio, University of Leeds, UK
- Özlem Altinkaya Genel, Hanze University of Applied Sciences Groningen, The Netherlands
- Wolfgang H. Börner, Museen der Stadt Wien, Austria
- Nadia Charalambous, University of Cyprus, Cyprus
- Ayşe Sema Kubat, Istanbul Technical University, Turkey
- Darko Reba, University of Novi Sad, Serbia
- Aslıhan Ünlü, Özyeğin University, Turkey
- Anda Scupin, Universitatea Tehnica de Constructii Bucuresti, Romania
- Nicola Santopuoli, "Sapienza", University of Rome, Italy
- Murat Sahin, Özyeğin University, Turkey
- Éva Lovra, University of Debrecen, Hungary
- Özlem Köprülü Bağbancı, Uludağ University, Turkey
- Marko Kiessel, ARUCAD – Arkin University of Creative Arts and Design, Cyprus
- Marco Cadinu, University of Cagliari, Italy
- Hülya Turgut, Özyeğin University, Turkey
- Danica Stankovic, University of Nis, Serbia
- Sercan Sağlam, Koç University, Research Center for Anatolian Civilizations (ANAMED), Turkey
- Nir Buras, Classic Planning, USA
- Tomasz Bradecki, Silesian University of Technology, Poland
- Matteo Ieva, Politecnico di Bari, Italy
- Pier Federico Caliri, Politecnico di Torino, Italy
- Thomas Greene Rankin, California Polytechnic, USA
- Giuseppe Strappa, "Sapienza" University of Rome, Italy
- Paolo Carlotti, "Sapienza" University of Rome, Italy
- Giuseppe C. Arcidiacono, Università Mediterranea di Reggio Calabria, Italy
- Renato Capozzi, University of Studies of Naples "Federico II", Italy
- Gjergj Islami, Polytechnic University of Tirana, Albania
- Francesca Romana Stasolla, "Sapienza", University of Rome, Italy
- Konstantinos Tziampasis, Excavation project, Roman Villa of Loutraki (Corinth), Greece
- No'man M.H. Bayaty, Tishk International University, Iraq
- Şebnem Hoşkara, Eastern Mediterranean University, Cyprus
- Nevter Zafer Cömert, Eastern Mediterranean University, Cyprus

Table of Contents

<i>Editorial Note to Volume II</i>	4
Zeynep Ceylanlı	
Pelın Günay	
Ezgi Çiçek	
<i>AACCP 2021 CALL FOR PAPERS</i>	9
<i>Pozzuoli/Puteoli, a multilayered Mediterranean port city in the Neapolitan Bay. Integrated conservation of its long-lasting urban landscape</i>	10
Teresa Colletta	
<i>Vernacular architecture and seismic cultures in small towns: knowledge analysis and strategies for conservation. The case of Uglianaldo in Tuscany</i>	24
Denise Ulivieri	
Stefania Landi	
Marco Giorgio Bevilacqua	
<i>Spatiotemporal and diachronic vision for a small town</i>	36
Michela Marisa Grisoni	
<i>Spontaneous consciousness and critical result in urban fabric of Alberobello</i>	52
Raffaele Tarallo	
Roberta Occhionigro	
Ilaria Stea	
Matteo Ieva	
<i>Requalification of the historical fabric of Alberobello</i>	62
Emma Sabatelli	
Antonella Roma	
Maria Pia Tridente	
Matteo Ieva	
<i>Small town principles towards urban sustainability: the case study of INA Casa "Sbarre Inferiori" neighbourhood in Reggio Calabria</i>	74
Lidia Errante	
Alberto De Capua	
<i>The Prospects of Towns in Serbia: Current Challenges and Policy Framework</i>	84
Branislav Antić	
Aleksandra Djukić	
Jelena Marić	
<i>The remains of the Horrea Agrippiana in the Roman Forum, from survey to virtual reconstruction</i>	96
Francesca Montanaro	
Giorgio Verdiani	
Andrea Pasquali	
Ylenia Ricci	

<i>The formation process of the Regio quartadecima Constantinopolitana, Istanbul</i>	108
Alessandro Camiz	
Hasan Sercan Sağlam	
Özge Özkuvancı	
<i>Adstratum and substratum: the typological process of the patio-house in Caesaraugusta (Zaragoza)</i>	120
Özge Özkuvancı	
Alessandro Camiz	
<i>From Roman to Umayyad: the formation process of the great Mosque of Damascus and the surrounding urban tissues</i>	126
Louai Al Hussein	
Alessandro Camiz	
<i>Architecture and Landscape of the North Caucasus. Historical and procedural study of settlement systems and reconstruction of anthropization of territory. Heritage and its potential</i>	140
Anna Linnik	
<i>Morphology of the podium house for the multi-layered history of Apollonia ad Rhyndacum (Gölyazı)</i>	152
Ecem Boyacı	
Alessandro Camiz	
<i>The typological process of the Anatolian houses in Tophane district, Alanya</i>	162
Uzay Topal	
Alessandro Camiz	
<i>Mediterranean cities in transition: knowing Venetian Candia between the lines of current Heraklion</i>	172
Emma Maglio	
<i>Analysis on Traditional Houses in Ortahisar and Ortamahalle, Trabzon</i>	182
Pelin Arslan	
Alessandro Camiz	

Editorial Note to Volume II

Zeynep Ceylanlı
 Özyeğin University, zeynep.ceylanli@ozyegin.edu.tr

Pelin Günay
 Özyeğin University, pelin.gunay@ozyegin.edu.tr

Ezgi Çiçek
 Özyeğin University, ezgi.cicek@ozyegin.edu.tr

AACCP (Architecture, Archaeology and Contemporary City Planning) is a multidisciplinary and progressive network, which has gathered researchers, experts and practitioners from various research fields and countries to discuss topics related to urban development and city planning since 2014. One of the main aims of the network is to promote collaboration between different actors and increase the understanding of the profitable co-existence of the past, present and future within urban and rural environments. With this task in mind, we organised the eighth AACCP symposium, Cities in evolution: diachronic transformation of urban and rural settlements, in collaboration with the Dynamic Research on Urban Morphology (DRUM) laboratory at Özyeğin University in Istanbul and After Damages International Academy. The symposium accepted 157 peer reviewed papers, it was chaired by Alessandro Camiz (Özyeğin University) and Zeynep Ceylanlı (Özyeğin University) and it included some papers from the former edition of AACCP, which was scheduled in Beirut in 2020 but was unfortunately cancelled following the dramatic port explosion in Beirut and the pandemic outbreak. This edition of the AACCP symposium was held entirely online at Özyeğin University, Istanbul, Turkey from April 26th to May 2nd 2021, with the patronage of the Embassy of Italy in Turkey; International Council on Monuments and Sites, ICOMOS TÜRKİYE; International Council on Monuments and Sites, Consiglio Nazionale Italiano dei Monumenti e dei Siti; "Storia della città", Centro internazionale di studi per la storia della città, fonti d'archivio e patrimonio architettonico-ambientale; Cyprus Network of Urban Morphology (CyNUM); Vlahsaray Panagia (Paramythia) Greek Orthodox Church Foundation in Fener and it included live virtual guided tours and events. Within the keynote speakers we should mention: Per Elias Cornell (University of Gothenburg), Federica Maietti (University of Ferrara), Alessandra Capuano ("Sapienza", University of Rome), Özge Samancı (Özyeğin University), Nicola Marzot (University of Ferrara), Zeynep Ahunbay (ITU- ICOMOS TR), Zeynep Enlil (YTU- ICOMOS TR) and Zeynep Kuban (ITU-ICOMOS TR). The book of abstracts has been published before the conference (Camiz, Ceylanlı, Önsel Atala, Özkuvancı eds., 2021). A Prix de Istanbul of 1000 euro prize for the best AACCP 2021 paper was issued by Özyeğin University's Rector, Prof. Esra Gençtürk. Peer reviewers while peer reviewing the AACCP2021 symposium papers short-listed them. An independent award committee read the shortlisted papers and issued the award. The Prix de Istanbul committee was composed of Aslıhan Ünlü, Özyeğin University, Turkey; Ayşe Sema Kubat, Istanbul Technical University, Turkey; Pia Englund, Senior Landscape Architect, TENGBOM, Sweden; Marco Trisciuglio, Politecnico of Torino, Italy; Wowo Ding, Nanjing University, China and Giuseppe Strappa, "Sapienza", University of Rome, Italy. The Prix de Istanbul, best AACCP 2021 paper award of one thousand euro, was assigned by the Prize committee to Emma Sabatelli, Antonella Roma, Maria Pia Tridente and Matteo Ieva in recognition of the paper entitled *Requalification of the Historical Fabric of Alberobello*. (Sabatelli, Roma, Tridente, and Ieva, 2022). The Prize committee decided to assign honourable mentions to three other papers: Bruna di Palma and Marianna Sergio, for the paper entitled, *Unveiled Ruins. Exhibition Narrative and Open Prospects for the Archaeological Museum of Paestum*; Özge Özkuvancı and Alessandro Camiz for the paper entitled *Adstratum and Substratum: the Typological Process of the Patio-House in Caesaraugusta (Zaragoza)* and to Chiara Ravagnan, Maria Paz Abad Gonzalez and Jiu Ambani in recognition of the paper entitled *A regeneration for Eastern Rome: a Sustainable Path to Connect, Enhance Identity and Build a Resilient City*. All the Prix de Istanbul shortlisted authors were invited to submit their essay for a special issue of "Forma Civitatis: International journal of urban and territorial morphological studies" (IJUTMS), published by Grünberg Verlag, Weimar and Rostock. (Camiz, Verdiani and Ebert eds., 2022)

In Volume 2 of the Book of Proceedings, the majority of the texts concentrate on the Mediterranean cities from different perspectives. As listed in the call for papers of this symposium, small towns, urban and rural evolution, diachronic urban-territorial studies are some of the focal points of the papers in this volume. In her

paper *Pozzuoli/Puteoli, a multilayered Mediterranean port city in the Neapolitan Bay. Integrated conservation of its long-lasting urban landscape*, Teresa Coletta reviews the urban history of Pozzuoli, highlighting the natural catastrophes that affected its existence, evolution, and finally within the public restoration works its future as a spot in cultural tourism. Denise Ulivieri, Stefania Landi and Marco Giorgio Bevilacqua in *Vernacular architecture and seismic cultures in small towns: knowledge analysis and strategies for conservation. The case of Uglianaldo in Tuscany* investigated the effects of seismic movements on the local architectural culture of northern Tuscany, creating a 'seismic culture' and providing peculiar technical solutions to achieve earthquake resilient buildings. Another study on northern Italy, Michela Marisa Grisoni's *Spatiotemporal and diachronic vision for a small town* reveals the importance of interdisciplinary collaborations while working on the micro-histories of small towns such as Vizzola Ticino. Two papers on the historical urban fabric of Alberobello put forth the outcomes of the studies held in Dicar Department of Politecnico di Bari: in their paper *Spontaneous consciousness and critical result in urban fabric of Alberobello*, Raffaele Tarallo, Roberta Occhionigro, Ilaria Stea and Matteo Ieva studied the morphological urban tissue of the city as an organism, while in their paper *Requalification of the historical fabric of Alberobello*, Emma Sabatelli, Antonella Roma, Maria Pia Tridente and Matteo Ieva read the city by focusing on the unique housing of trulli, their validation, preservation, recovery and the contemporary building fabric proposals. The sustainability of habitation and further preservation of the small towns were underlined in the symposium as an immediate action to be taken. Lidia Errante and Alberto de Capua discussed this issue within the framework of Reggio Calabria in their paper *Small town principles towards urban sustainability: the case study of INA Casa "Sbarre Inferiori" neighbourhood in Reggio Calabria*. Followingly, Branislav Antić, Aleksandra Djukić and Jelena Marić discuss the future of the small towns from the perspective of policy making in their paper *The Prospects of Towns in Serbia: Current Challenges and Policy Framework*.

This volume also includes papers that use a transdisciplinary and interdisciplinary approach within the areas of archaeology, architecture, survey, restoration and design. While presenting the outcome of their collaboration in ISAR 2020 summer school in their work *The remains of the Horrea Agrippiana in the Roman Forum, from survey to virtual reconstruction*, Francesca Montanaro, Giorgio Verdiani, Andrea Pasquali and Ylenia Ricci sheds light to the benefit of using digital survey and design methods, adding up to the archival input in order to achieve a more comprehensive understanding of the complex under scrutiny. Following that, three morphological studies dwell on the archeological and archival data in their researches on Byzantine Constantinople (Alessandro Camiz, Hasan Sercan Sağlam, Özge Özkuvancı in *The formation process of the Regio quartadecima Constantinopolitana, Istanbul*), Zaragoza (Özge Özkuvancı and Alessandro Camiz in *Adstratum and substratum: the typological process of the patio-house in Caesaraugusta*) and Damascus (Louai Al Hussein and Alessandro Camiz in *From Roman to Umayyad: the formation process of the great Mosque of Damascus and the surrounding urban tissues*). Anna Linnik in her paper *Architecture and Landscape of the North Caucasus. Historical and procedural study of settlement systems and reconstruction of anthropization of territory. Heritage and its potential* focuses on the human intervention of the landscape and its leading to the formation of architectural culture. The following works conducted typological studies about the morphology of Gölyazı (Ecem Boyacı and Alessandro Camiz in *Morphology of the podium house for the multi-layered history of Apollonia ad Rhyndacum Gölyazı*) and of Alanya (Uzay Topal and Alessandro Camiz in *The typological process of the Anatolian houses in Tophane district, Alanya*), consecutively. Finally, Emma Maglio retrospects on the history of Candia/Heraklion for better understanding the Mediterranean cities with their layered pasts.

References

- Camiz, A. (2022) 'Prix de Istanbul. Diachronic morphology of the ever changing urban form'. *Forma Civitatis. International Journal of Urban and Territorial Morphological Studies*, 2(1), pp. 10-21.
- Camiz, A.; Verdiani, G. and Ebert, M. (eds.) (2022) *Cities in Evolution. Prix de Istanbul. Forma Civitatis. International Journal of Urban and Territorial Morphological Studies*, 2(1), Grünberg Verlag, Weimar and Rostock.
- Sabatelli, E., Roma, A., Tridente, M. and Ieva, M. (2022) 'Requalification of the historical fabric of Alberobello'. *Forma Civitatis. International Journal of Urban and Territorial Morphological Studies*, 2(1), 22-33.
- Camiz, A. (2021) 'Cities in evolution: diachronic transformation of urban and rural settlements. 8° AACCP International Symposium, Istanbul, 26 April - 2 May, 2021', *Urban form and design, International Journal of Urban Morphology*, 15, 198.

Camiz, A.; Ceylanlı, Z.; Önsel Atala, Z. and Özkuvancı, Ö. (eds.) (2021) *Cities in Evolution. Diachronic Transformations of Urban and Rural Settlements. Book of abstracts*, (VIII AACCP, Architecture, Archaeology and Contemporary City Planning symposium, Özyeğin University, Istanbul 26/4-2/5 2021), DRUM Press, Istanbul.

Özkuvancı, Ö. and Camiz, A. (2023) *Zaragoza'nın Tipolojik Sürecinin Sıra Evler Üzerinden İncelenmesi*, (IV. Kentsel Morfoloji Sempozyumu Bildiriler Kitabı, Konya, 31/5-2/6/2023) Türkiye Kentsel Morfoloji Ağı, Konya, pp. 211-219.

Seppänen, L.; Verdiani, G. and Cornell, P. (eds.) (2019) *Architecture Archaeology and Contemporary City Planning. Memory of the Places. Abstract collection*, (AACCP2019, Rome, October 9-12, 2019), Lulu.com, Raleigh, NC, USA.

Burat, S.; Verdiani, G. and Cornell, P. (eds.) (2019) *Architecture Archaeology and Contemporary City Planning. Multi-Layered Settlements. Proceedings*, (AACCP2018, Mersin, November 21-24, 2018) Lulu.com, Raleigh, NC, USA.

Seppänen, L.; Verdiani, G. and Cornell, P. (eds.) (2018) *Architecture Archaeology and Contemporary City Planning. Reformation, Regeneration and Revitalisation. Proceedings*, (AACCP2017, Turku, May 15-18, 2017) Lulu.com, Raleigh, NC, USA.

Dixon, J.; Verdiani, G. and Cornell, P. (eds.) (2017) *Architecture Archaeology and Contemporary City Planning. Issues of Scale. Proceedings*, (AACCP2016, London, September 22-25, 2016) Lulu.com, Raleigh, NC, USA.

Rodríguez-Navarro, P.; Verdiani, G. and Cornell, P. (eds.) (2015) *Architecture Archaeology and Contemporary City Planning. State of knowledge in the digital age. Proceedings*, (AACCP2015, Valencia, May 18-20, 2015) Lulu.com, Raleigh, NC, USA.

Verdiani, G. and Cornell, P. (eds.) (2014) *Architecture Archaeology and Contemporary City Planning* (AACCP2014, Florence, June 16-18, 2014) Lulu.com, Raleigh, NC, USA.

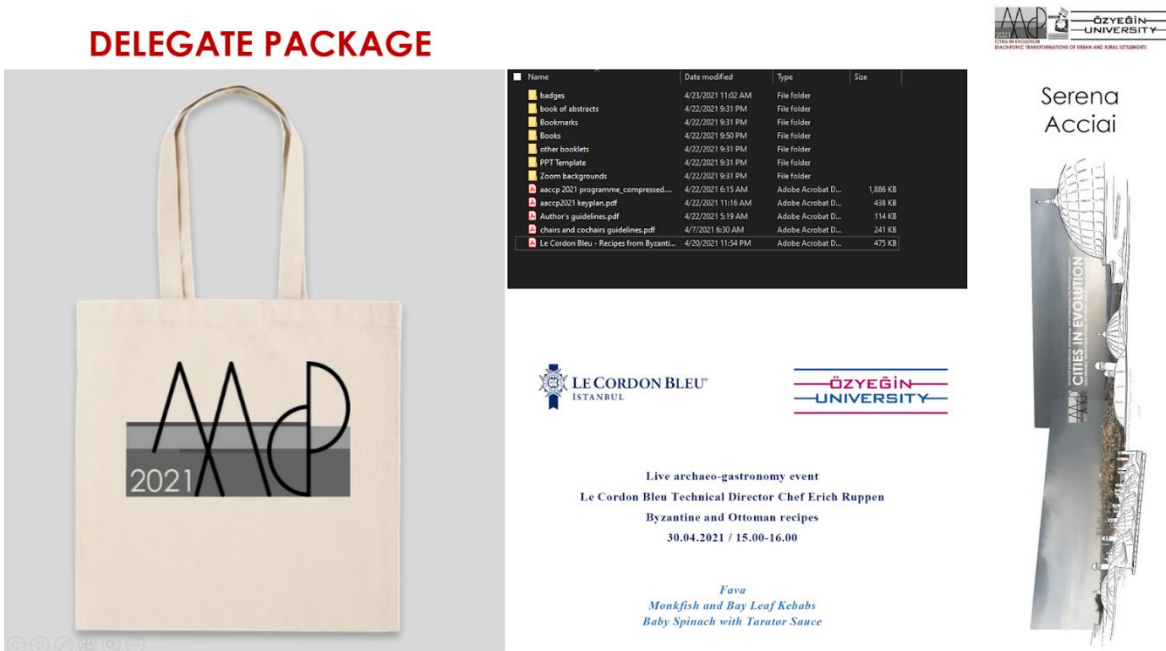


Fig. 1 The delegate package. Cities in evolution: diachronic transformation of urban and rural settlements. VIII AACCP International Symposium, Özyeğin University, Istanbul, 26 April - 2 May, 2021.



Fig. 2 The Zoom background included in the delegate package. Cities in evolution: diachronic transformation of urban and rural settlements. VIII AACCP International Symposium, Özyeğin University, Istanbul, 26 April - 2 May, 2021.

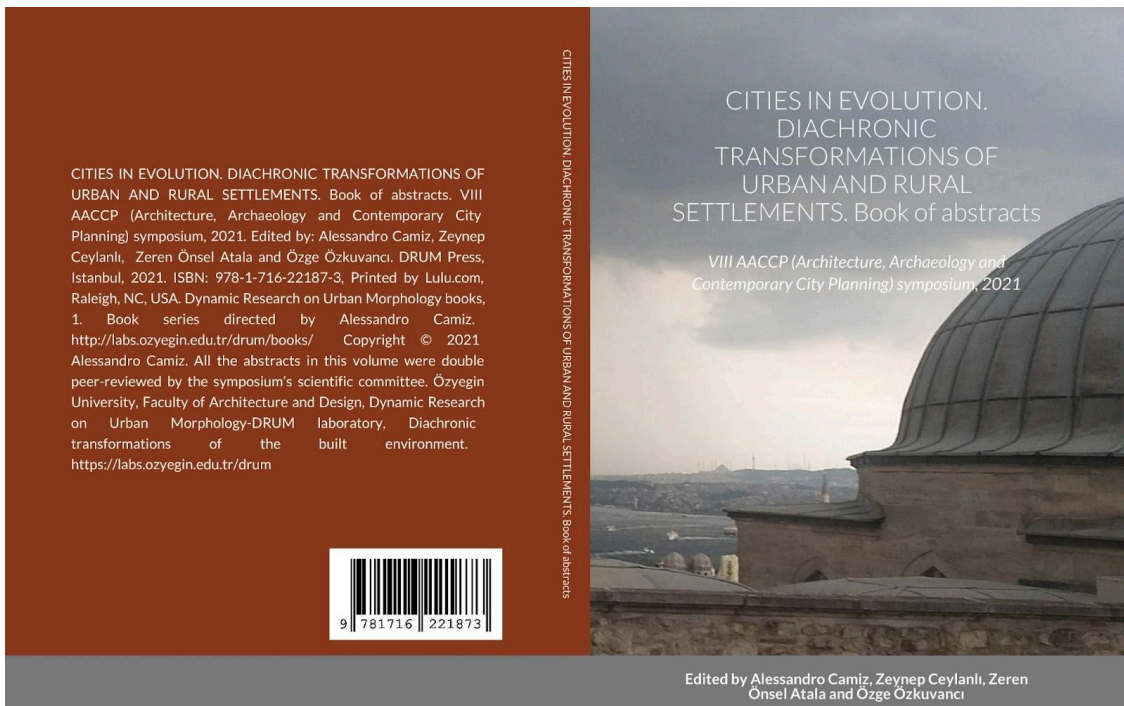


Fig. 3 Cover of the AACCP 2021 Book of Abstracts (Camiz, Ceylanlı, Önsel Atala and Özkuvancı eds., 2021).

Forma Civitatis, International journal of urban and territorial morphological studies aims to publish yearly scientific researches in English, characterized by the application of innovative and experimental methods. The covered themes range from urban morphology, to the history of architecture, to the theory of form, to survey, to architectural design and restoration, without excluding on the other hand, the studies in the discipline of archaeology. The journal adheres to the Open Access philosophy, as part of a general policy of reducing the cultural divide of the contemporary world. It will be freely accessible online, and available in print on demand technology thanks to the publishing house's kind efforts in Weimar and Rostock.

FORMA CIVITATIS, International Journal of Urban and Territorial Morphological Studies, Vol. 2, N. 1, 2022, Grünberg Verlag, Weimar and Rostock, GREEN OPEN ACCESS, 1125-2020-FC, ISSN: 2748-2812 (Print); ISSN: 2748-3134 (Online); ISSN: 9783933713681

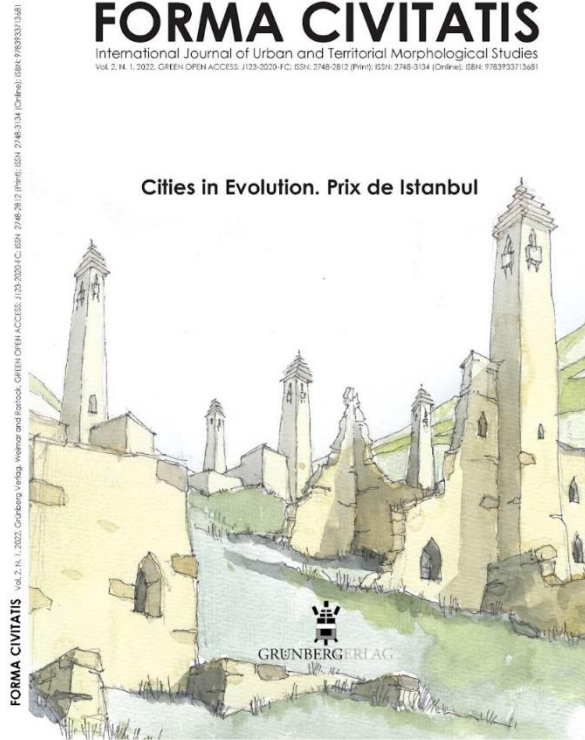


Fig. 4. Cover of the special issue of *Forma Civitatis. International Journal of Urban and Territorial Morphological Studies*, collecting the AACC2021 papers selected for the Prix de Istanbul (Camiz, Verdiani and Ebert eds., 2022).

AACCP 2021 CALL FOR PAPERS

AACCP (Architecture, Archaeology and Contemporary City Planning) is a multidisciplinary and progressive network, which has gathered together researchers, experts and practitioners from various fields to discuss topics related to urban development and city planning since 2014. One of the main aims of the network is to promote collaboration between different actors and increase understanding of the profitable co-existence of the past, present and future in urban environments. With this task in mind, we are happy to invite you to the eighth AACCP symposium organized in collaboration with the Dynamic Research on Urban Morphology (DRUM) laboratory at Özyeğin University in **Istanbul, Turkey on April 26th-May 2nd, 2021.**

With the theme **CITIES IN EVOLUTION DIACHRONIC TRANSFORMATIONS OF URBAN AND RURAL SETTLEMENTS** we are inviting contributors to present papers that fall within the cross section of architecture, archaeology and city planning and are related, but not limited, to the following topics:

Conference themes:

- Archaeology, architecture, survey, restoration and design, transdisciplinary and interdisciplinary studies
- Urban and rural evolution, landscape redevelopment and regeneration
- Diachronic urban-territorial studies and "longue durée" history
- Small towns: visions, ideas and realizations – principles in practice
- The role, (mis)use and utilisation of archaeology in city planning and design
- Collaboration between city planners, architects, archaeologists, designers and developers
- Public-private-people partnership in urban planning and archaeology
- Climate crisis, COVID-19 crisis, migration, cities and cultural heritage
- Museums, libraries, universities and the social perspective of heritage
- Functionality, sustainability and attraction of archaeological sites, cities and rural territory

If you wish to participate in the symposium and present your studies, experiences and ideas at the AACCP2021 in Istanbul, please submit your proposal with an abstract (maximum 3000 characters, including the references, spaces included) and a short bio 1000 characters, spaces included and a photo, using the abstract template) by **January 15 25th, 2021**. The abstracts will be peer reviewed by the scientific committee; we will announce acceptance by email on **February 25th**. You may also participate in the meeting without a paper. The programme consists of presentations and discussions, excursions in and outside Istanbul as well as social activities that have proved to be very fruitful and to bring interesting ideas for a new kind of research and collaboration. We will publish the full programme on the website by **March 28th, 2021** after the acceptance of papers. Özyeğin University will kindly host the meeting, participation to the symposium is free, but each participant should pay for accommodation, meals, other activities and excursions. **All participants, even those who will not present a paper, should register** to the symposium by **March 1st, 2021**. We will send further details about the registration to those who have submitted an abstract by January 15th. **The abstracts already accepted for AACCP2020 in Beirut (which was cancelled) will be included in AACCP2021 Istanbul**, nevertheless, we kindly ask to the authors who intend to take part to confirm their participation by submitting online the abstract using the new template. The conference will be in a hybrid form, considered the most likely travel restrictions from/to different countries. The conference will take place in different on-site locations all connected synchronously, within this Distributed Conference Virtual Environment (DCVE), it will be possible to organise plenary and parallel sessions as well as real and virtual site visits. If you wish to organise a site visit, please **specify it in your online registration form...** We will publish the papers of the AACCP2021 in a PDF volume with ISBN code. Deadline for full paper submission (using the provided template is, **June 1st 2021**. In addition, selected papers might be later considered for publication on "FORMA CIVITATIS: International journal of urban and territorial morphological studies" (IJUTMS), Grünberg Verlag, Weimar-Rostock. <http://www.formacivitatatis.com/>.

We are looking forward to spending productive days together in spring. Welcome to Istanbul.
Istanbul, October 1st, 2020.

On behalf of the organising committee:
Alessandro Camiz and Zeynep Ceylanlı

Small town principles towards urban sustainability: the case study of INA Casa "Sbarre Inferiori" neighbourhood in Reggio Calabria

Lidia Errante

Mediterranea University of Reggio Calabria, Department of Architecture and Territory
lidia.errante@unirc.it

Alberto De Capua

Mediterranea University of Reggio Calabria, Department of Architecture and Territory
adecapua@unirc.it

Keywords: Small towns, Urban sustainability, INA Casa neighbourhoods

Abstract

Residential neighbourhood, here intended as potential small towns, are privileged places of theoretical and practical experimentation of quality-of-life enhancement approaches related to several sphere of inhabiting. Concepts as proximity, '15-minute-city', urban democracy, or holistic sustainability are often associated to the urgency to rethink urban living from a social and a spatial point of view, towards an ideal of self-sufficient, liveable, dense, and enjoyable small town. The project for INA Casa "Sbarre Inferiori" neighbourhood in Reggio Calabria offers the chance to develop such a perspective on a real case study. Placed in a very complex urban context, the neighbourhood presents a valuable architectural heritage in need of redevelopment on the one hand, and a poor quality of urban spaces in terms of opportunities and accessibility on the other. The project is, indeed, an opportunity to survey and re-contextualise a less known case within the wider literature on the Italian INA Casa Plan, which yet embeds all the quality features of the time in terms of formal, spatial, environmental, and technological qualities.

The aim of this contribution is to identify and develop principles according to which urban living can be re-designed and the quality of life of social housing residents can be improved from the houses to the neighbourhood scale, through a redefinition of urban forms inspired by the observation of small cities. The design of spaces, indoor and outdoor, private, and public, common, and collective, services and activities of everyday life, responds in fact to principles of flexibility, incrementality, proximity and urban density, with particular attention to energy and environmental performance that could be integrated without deny the formal sense of the original urban and buildings shape. In fact, the project is conceived as a set of trans-scalar micro-interventions able to provide specific responses to particular needs of domestic living - as in the case of technological and spatial additions to the buildings - also recreating a unitary and coherent form at the urban scale, introducing new and contemporary elements of design.

Methodology

This contribution is part of research work within a post-doctoral grant in Sustainable Building at the Department of Architecture and Territory (dArTe) of the "Mediterranea" University of Reggio Calabria. The research investigates the issue of sustainability - environmental, economic, and social - in public housing districts in the relationship between social housing, public space, and quality of living. The research aims to identify criteria and theoretical and applicative approaches to redevelop existing public housing districts to meet the needs of contemporary society. On the one hand, by acting on the built environment and the built heritage through low-tech actions for energy efficiency, drawing on a wide range of regulatory tools and market solutions responding to the purpose. On the other hand, acting on the urban environment and public space of residential relevance on which research is investigating technologically and socially performing solutions.

The contribution will describe in particular this second aspect, identifying the socio-spatial paradigms of urban design that, in the specific case of public housing estates, can regenerate the social commons and promote sustainable behaviour through the design of green, accessible and inclusive public and communal spaces.

The methodology of the research is structured as follows:

1. Framing of the research topic (social housing/residential public spaces) in the contemporary cultural debate, with particular reference to the post-pandemic perspective;
2. Analysis of the relationship between residence and quality of living according to a historical-anthropological and socio-spatial perspective, to infer "timeless" needs, criteria and design paradigms;
3. Selection and study of a case study for the analysis and the experimentation of meta-design scenarios according to the project criteria mentioned in point 2.
4. Comparison and critical analysis of the qualitative and quantitative of meta-design scenarios in terms of sustainability of the intervention and improvement of housing, technological and social performance.

The research framework of social housing neighbourhoods is restricted to the European context to facilitate the selection of reference case studies and best practices and, as a consequence, the comparison between them in force of geographical, urban, formal, technological, social and economic factors. With due differences, which benefit and enrich the research, the phenomenon of social housing in Europe originates and develops with similar dynamics. Another key factor is the bond between many European cities with their ancient urban core, from which the modern and contemporary city has developed through the centuries. This aspect is pivotal for the questions and goals of this contribution, which will describe the efforts of the research to deduce principles and criteria of small towns that are replicable in the redevelopment of social housing estates. According to this principle the case study of the research is selected within the INA Casa Plan, which was implemented in Italy from 1949 to 1963, and which responded to the housing emergency producing at national level neighbourhoods and buildings of high architectural value. In particular, the INA Casa "Sbarre Inferiori" neighbourhood in Reggio Calabria, Italy, is identified for the meta-design experimentation phase of the research.

In the first section the paper questions what principles are still viable and applicable in the contemporary urban context. In the second section, those criteria will be described with reference to the meta-design experimentation.

Small towns, Modern city, Sustainable design.

The paper aims to identify the characteristics that define the quality of living by comparing two very different urban forms. These are the small towns and the Modern residential districts.

The research addresses the comparison between the two starting from some preliminary considerations:

1. The Modern city, by its very constitution, can be considered as a sum of small towns that are functionally self-sufficient;
2. Small towns and modern residential neighbourhoods present similar scales, dimensions and proportions;
3. Modern residential districts are characterised by housing densities similar to those of a village;
4. Modern housing estates and small towns often have similar scales, sizes, and proportions.

The modern city was displayed and developed during the 20th century due to the need to expand the tertiary sector and production, thus becoming a place of consumption and affirmation of the dominant life model. In particular, the capitalist model has contributed, on a worldwide scale, to extending the processes of urbanisation. These dynamics are not at the core of this paper's reflection but are the reasons that make the Modern city a pole of attraction for huge flows of people (and labour), as well as a place of violent social imbalances. The urban periphery of the modern industrial city and the working-class residential districts are the most affected, often lacking adequate spaces and services to make these places liveable and healthy. Today circumstances have changed, urban population is highly heterogeneous in demographic, social, economic, cultural, and professional terms, as are the lifestyles of individuals. On the other hand, the urban structure has often remained unchanged, limiting the full potential of entire communities, and contributing to poor quality of life.

The circumstances of the pandemic have further highlighted that the issue of the quality of residential space is not an abstract concept, but closely linked to specific spatial issues. In residential neighbourhoods, these translate into a lack of outdoor social, recreational, sport, communal and collective activities carried out in healthy, green, safe, and accessible public spaces. E.G., a lack of opportunities and possible interactions.

These weaknesses were already evident in ordinary circumstances and have long been part of the cultural debate on the physical and social degradation of the urban periphery. However, the pandemic has forced a large part of the world's population to live exclusively in their neighbourhoods without being able to compensate for the lack of activities and services by reaching other districts or the city centre.

It was the pandemic circumstances that have suggested the idea to look at the archaic and ancient small that recall in the collective imagination, an idea of well-being and quality of life. The research in this sense does not aim to demonstrate the naive conviction that small towns are tout court idyllic places far from all problems. On the contrary, it is questioning whether and how small towns have addressed the socio-spatial needs of their communities and whether is still possible to integrate these principles into the Modern city. Small towns are well known for the quality of life that they offered in the past as well in the present times, for their well-balanced position between the natural environment, social relations, cultural heritage and local economies. All these features lead to physical configurations that allow communities to feel rooted and connected with that place, creating a sense of belonging which is often missing in the Modern residential district.

Urban scale vs. Human scale.

It is crucial to define the features of small towns that could or would be recreated in residential districts. This is to avoid two possible misunderstandings concerning the mediating relationship between the small town, the properly urban dimension, and the rural ones (Porter, 2010) and the "back-to-the-village" rhetoric (Graziano, 2021).

The first element of discussion concerns the human scale of the built environment as a precondition for a high perceived quality of urban living. This aspect contains the peculiarities of the so-called 'good city' (Lynch, 1984; Amin, 2006). Small towns are planned and designed to be inherently human scale, flexible according to the needs of their inhabitants, who actively collaborate in its expansion, are involved in the care of public affairs, and develop a sense of affection and identity. The scale of the Modern City is urban, and its built environment is designed to meet the functional needs of the city itself. A huge car-centred space imagined being crossed by flows of people, goods, and resources at the highest possible speed, with a great rate of privatisation, exploitation and commodification of public space and loss of urban accessibility. In this way, social cohesion is easily eroded by an attitude that does not see the community as a profitable resource, except as potential consumers.

Small urban centres, like ancient settlements, respond to intrinsic principles of sustainability that find expression in harmonious spatial configurations that respect the balance between humans, culture, and nature. As a consequence, they are socially, economically and environmentally sustainable. Small towns and ancient settlements have been developed in balance between humans, cultural and natural issues. Nowadays, such small centres remain untouched by wild urbanisation dynamics, so they stand for us as a reference to understand how to correct many of the contradictions of contemporary urban living.

Another element is related to the environment, related to healthy living spaces, and contact with nature. In the first case, the circumstances of the pandemic have renewed society's concern about the healthiness of indoor and outdoor environments, with particular reference to the presence of particulate matter in the air and health risk factors related to exposure to pollutants. The spread of Covid-19 and the increase in mortality rates concerning urban air quality as a result of two causes. One identified by the Harvard Department of Biostatistics, which reports an increased risk in the elevated presence of particulate matter in the air (Wu et alii, 2020), which according to the Italian Society of Environmental Medicine (SIMA) would be able to carry trace amounts of virus RNA. The second is related to exposure to nitrogen dioxide, a toxic pollutant produced by fuel combustion, which increases mortality risk factors with effects on hypertension, cardiovascular disease, pulmonary dysfunction, diabetes, and the immune system (WHO, 2003; Ogen, 2020). In this sense, there are prevention and containment measures that depend on urban healthiness and quality. Understandably, the concern about these issues has led society to re-evaluate life in the countryside or peri-urban areas, with an increased inclination of individuals to self-produce food and cultivate the land (Coldiretti, 2020). On the other hand, the idea of a place with less pollution, cars and noise and much closer contact with nature, local products and a sense of authenticity finds in the small town the ideal archetypal.

Proximity is another matter of concern that distinguishes the Modern city and the small towns. The former is very extensive, divided into functional areas which often coincide with neighbourhoods and which, especially if located on the urban periphery, do not always have all the basic and mobility services, or leisure and recreation activities. The issue of mobility goes hand in hand with that of proximity since, in the absence of services or opportunities within walking distance, the quality of connections is directly proportional to the level of accessibility guaranteed to individuals. Small towns, by definition, are compact and dense, which makes them extremely close to a concept of proximity bordering on self-sufficiency. All the needs linked to the wellbeing of the community are met within the small city and by its inhabitants who, once again, are directly involved in caring for places and each other.

Learning from small towns.

The just mentioned issues - human scale, environment, and proximity - embed several other characteristics of small towns that denote not only their socio-spatial quality but also their sustainability. Certainly, during the foundation of ancient settlements, regardless of the historical period, attention was not paid to the concept of sustainability as we know it today. Equally, the protection and rationalisation of resources, respect and balance between the times and needs of man, nature, production, and livestock were necessary for the survival of the settlement and its inhabitants.

To understand the logic behind this *ante litteram* sustainability, the research analysed villages and small towns, including ancient ones, to understand how certain dynamics and needs - anthropological, economic, and infrastructural - were translated into spatial solutions that have been handed down to the present day. This part of the research does not aim to provide an exhaustive abacus of solutions and does not claim to be a historical or archaeological effort. This ancient know-how can be retraced since the beginning of human society and the development of the first settlements and are still visible in the small towns.

Villages, towns, or cities are the results of anthropological, economic, and infrastructural issues related to the social cohesion of a community, the perception of the urban surrounding as the extension of their own home, an undefined threshold between private and public, politics and culture. Before globalization, an urban form had to be self-sufficient according to an economy mainly based on local production and subsistence dynamics, craftsmanship, artisanry and the optimization of the landscape resources. Eventually, the expansion of a settlement needs infrastructural requirements in terms of streets and mobility, defensive structures, services, and buildings to host the public, private and religious activities of the community.

Anthropological, economic, and infrastructural issues are interlaced and concatenated. One affects the other, they are directly proportional and linked by cause-effect relationships. Individually, they can be associated with specific and elementary urban public spaces which are, in fact, the generating principles of any settlement and which have changed through the centuries according to the evolution of the society. The square represents the highest form of social space, around which the main cultural, political, and religious urban polarities emerge, like the cathedral or the town hall. The market is another polarity that often requires a defined and specific urban space, designed for the purpose. And, of course, the settlement itself, made by buildings and streets, relates to the natural and morphological context.

Squares, streets, and collective activities, whether political, religious, or economic, are the generation centres of any settlement from prehistory and towards the centuries. In ancient Greece, we can see how entire residential units or *insulae*, are built around an inner private but collective square and the multiplication of the *insulae* defines the urban form delimited by the main streets in a way that is still visible in the peripheral fringes of the city, as in the case of the suburb of the port of ancient Delos.

The streets and, eventually, the square are instead the generating elements of the Roman settlements, built around the *Cardus* and *Decumanus*, with open space of the Forum is at the very core (Benevolo, 1978). These elementary principles find their balance in the medieval city, where the square at the core of the town represent the public, the economic, the political and the religious assets. It is the main public, social and functional infrastructure, a sum of the key activities of the city.

The case of the medieval city allows to identify several principles that are still visible in the small towns, which are:

- a clear polarity, the main reference and landmark for the entire town;
- a central open space, directly accessed by the main buildings and connected to the main street;
- a dense and incremental urban form that grows according to the increase population;
- an enclosed form, defined by walls or the natural environment itself (a river or a mountain);
- a condition of safety and self-sufficiency.

These principles are still visible during the Renaissance, even when rearranged according to geometry and perspective rules. In this period, the boulevard became one of the main assets both for the inner city and the peripheral fringe: in the urban context, it embeds and connects other public spaces, while in the landscape connects the main city to other small towns. The transition from the road as a functional element connecting parts of the same city to the boulevard as a perspective axis, allows the roads to be an integral part of the public space infrastructure. The street as a public space host flows of goods and people, it is part of an urban scene and leads to an urban polarity recreating an experience of space together with the square. This approach is applied to the existing urban centre as well as to the suburban fringes of new developments. The transition towards the Industrial city, even before the Modern ones, doesn't see in streets and squares the basic elements, the core around which the city was expanding and developing according to an incremental pattern. Camillo Sitte (1886) warned the intellectual community at the end of the 19th century about the crisis of the city due to the dynamics of urban industrialisation, such as the transformation of beautiful Italian squares into car parks. Although well in advance, Sitte predicted what would happen to the 20th-century city, where polarities and open spaces are no longer visible, and the main streets, the boulevards, are lost in the orderly mesh of the new working-class neighbourhoods. Industrial production attracts a large number of workers and labour force to the cities, who with their families are relocated and concentrated in working-class neighbourhoods.

The boundary lines between public and private space - the street fronts - are enough to define the urban fabric. Public administration and real estate divide up the management of urban space according to the logic of profit and functional rationalisation. Quality of life and urban hygiene criteria often collide in the definition of the new suburban working-class neighbourhoods. Sitte's warning was in fact: "With today's ways of building cities, the relationship between built and free surfaces is even reversed. In the past, the free space (streets and squares) was a closed of well-proportioned form to a given effect; today it is the building lots that are carved out as regular closed figures and, what remains, a street or square."

Towards sustainability.

The emerging culture of sustainability has stimulated a design practice increasingly sensitive to what surrounds us, that recognise the identity of places as the prerequisite for any action on the territory and to react to the globalisation logic. Search for its characteristics and its identity signs appear to be the only way to understand its values. Only a careful analysis can guide the project, updating the characters that have distinguished the places and that, over time, have transmitted their identity to us. The affirmation of the concept of identity is today one of the principles on which to base innovative sustainable policies of urban development, aimed at the quality of living and able on the one hand to avoid the homologation that is spreading, on the other hand, to enhance the existing heritage.

The topic of Social Housing well describes the new instances of contemporary living that is in continuous evolution because it refers to a variety of situations, conditioned by the particular period in which we live and that determines a residential demand that imposes on the market the requirement of flexibility to ensure the adaptability of inhabiting spaces. The very concept of home is no longer attributable to traditional standards of permanence and stability. The contemporary house becomes more and more often a temporary dwelling, an attribute of the mobility that characterizes our age and the design of residential space becomes the design of precariousness. The contemporary urban landscape can respond to new ways of mobility, of living sustainably and flexibly, for users who are increasingly demanding and sensitive to the qualitative aspects of the settlement (Jacobs, 2009).

It is clear that the era in which we live forces man to deal with economic, social and cultural revolutions that invite to rediscover the "multiplicity" of dimensions that characterize his living. The rapid transformations and the incessant socio-cultural fluxes of contemporary life make it necessary to formulate a new concept of

living, a new reflection on man and the construction of his spaces, starting from what has been done especially in Italy.

To the social issues that have emerged, we must inevitably add the new cultural positions and design attitudes that arise from the further assumption and principles of sustainable development, which leads to the emergence of new needs to design and create residential spaces:

- The evolution of the construction and industrial processes towards systems able to reduce consumptions and impacts.
- The need to contain the consumption of material resources, introducing the concepts of a useful life cycle, recycling, and reuse.
- The issue of indoor environmental quality aimed at ensuring an optimal level of comfort of the interior spaces of the building.
- The need to create buildings with a strong predisposition to plant integration.

Towards a good city: a case study.

According to these considerations, within the research has been developed three meta-design scenarios based on the study of the case study. The project for INA Casa "Sbarre Inferiori" neighbourhood in Reggio Calabria (Fig. 1) offers the chance to develop such a perspective on a real case study. Placed in a very complex urban context, the neighbourhood presents a valuable architectural heritage in need of redevelopment on the one hand, and a poor quality of urban spaces in terms of opportunities and accessibility on the other. The project is, indeed, an opportunity to survey and re-contextualise a less known case within the wider literature on the Italian INA Casa Plan, which yet embeds all the quality features of the time in terms of formal, spatial, environmental, and technological qualities.

The neighbourhood was built before 1970 and it is formed by 26 buildings divided by large outdoor green spaces that, nowadays, suffer a condition of decay and underutilisation. The physical and social degradation of the district is connected with the poor design quality of the outdoor spaces and of the activities of everyday life (leisure, outdoor sport, parks and playgrounds) which does not stimulate the interest of the community in the care of their surroundings. On the other hand, the technological obsolescence of the buildings determines several inconveniences for the occupants, in terms of indoor comfort, heating and cooling of the air, access to renewable energy sources and, in general, the progressive increase in energy requirements to make up for these inefficiencies.

Within the research has been developed three meta-design scenarios, to understand how to contextualise and adapt some small-town criteria in the contemporary city. The first scenario (Fig. 2) deals with the theme of the boulevard as a distributive and recreational axis for the city, as an elongated square offering numerous open spaces aimed at a diversified target population with a particular emphasis on play and sports areas. This aspect is important in the light of offering not only opportunities for recreation but meeting and cohesion through educational activities. From a technological point of view these spaces, which are also scattered in the rest of the project masterplan, have kinetic paving able to produce energy to power public lighting. From this point of view, the optimisation of the spaces between the buildings and the technological solutions adopted can refer to criteria of incrementality, density, self-sufficiency, and safety, concerning the redesign of the urban boulevard and the redefinition of the hierarchy of routes. The second scenario (Fig. 3) integrates in the buildings a system of external ramps and lifts (missing in the original project) to increase the accessibility to the housing by the elderly, or in any case progressively ageing population. This system increases the surface of covered outdoor areas for public and collective use, through the integration of real arcades. The rest of the outdoor space is treated as gardens, integrating a green lung into the neighbourhood, and drastically increasing the level of permeability of the soil. These gardens are designed to allow residents to take care of them as common goods.

The third scenario integrates within the neighbourhood a system of water squares which, in times of drought, are spaces at a lower level than the street level, with the function of an arena, square and playground, but which act as pools for the collection of rainwater in case of heavy rainfall. The area is subject to frequent flooding during the winter season.

Conclusions

The partial results of the research (still in progress) show that it is not viable to apply *tout court* the principles and spatial forms of small towns to the suburbs of the modern city. On the contrary, it is possible rethink the regeneration of the infrastructure of public space according to the human-scaled structure of the small towns, organically reintroducing quality urban, without necessarily seeking to new polarities or centralities that could destabilize the socio-spatial dynamics.

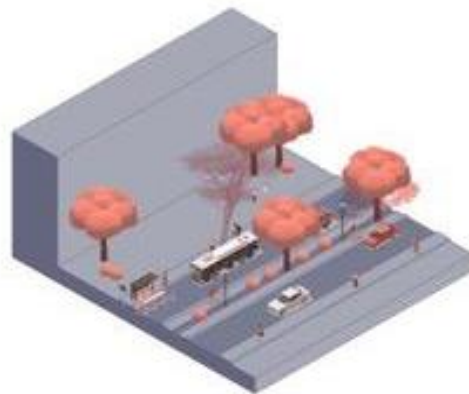
Another aspect is the control the impacts of huge and unpredictable events like the spread of pandemic events, quite easier if the society are able to control their proximity space and feel the responsibility to take care of the place and the others. In this sense, the concept of village or small towns can be seen in a double sense: on the one hand, the city form, on the other the social cohesion and sense of belonging, which are two sides of the same coin.

References

- Amin, A. (2006) *The Good City*. *Urban Studies*, Vol. 43, 5/6, 1009–1023.
- Benevolo, L. (1978) *Storia della città*. Bari: Laterza Editori.
- Coldiretti (2021) Covid, via libera a 1,2 mln di contadini per hobby. Retrieved from: <https://www.coldiretti.it/economia/covid-via-libera-a-12-mln-di-contadini-per-hobby>
- Graziano, T. (2021) Smart Technologies, Back-to.the.Village Rhetoric, and Tactical Urbanism: Post-COVID Planning Scenarios in Italy. *International Journal of E-Planning Research*. Vol. 10, 2.
- Jacobs J., (2009) *Vita e Morte delle Grandi Città. Saggio Sulle Metropoli Americane*. Torino: Einaudi.
- Latouche, S. (2011) *Il Tempo della Decrescita. Introduzione Alla Frugalità Felice*. Milano: Eleuthera.
- Lynch, K. (1984) *The Good City Form*. Cambridge: MIT Press.
- Sitte, C. (1953) *L'arte di Costruire le Città*. Milano: Officine Grafiche dell'Editore Antonio Vallardi. (Ed. or. 1886).
- Wu, X., Nethery, R.C., Sabath, M.B., Braun, D. & Dominici, F. (2020). Exposure to air pollution and COVID-19 mortality in the United States: A nationwide cross-sectional study. Retrieved from: https://projects.iq.harvard.edu/files/covid-pm/files/pm_and_covid_mortality_med.pdf



Fig. 1. The INA Casa "Sbarre Inferiori" Neighbourhood in Reggio Calabria.

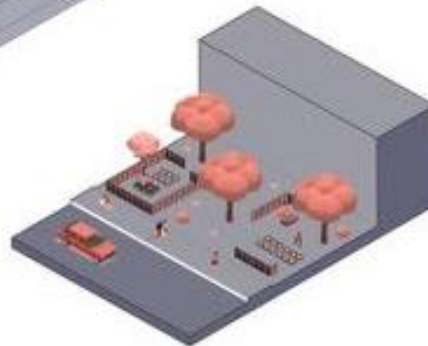


MOBILITÀ

REINQUANTAZIONE DEGLI ASSI STRADALI PER L'INTEGRAZIONE E LO SVILUPPO DELLA MOBILITÀ DOBLE, INDIVIDUANDO NELL'ASSE PRINCIPALE, UNA PISTA CICLABILE CHE VENE INSERITA ALL'INTERNO DEL CORRIDO GIÀ ESISTENTE, RIDISTRIBUZIONE DELLA PAVEDIMENTAZIONE PEDONALE, AVVENTO DELLA SEZIONE STRADALE PER CONNETTIRE IL MIGLIORE FLUSSO DI TRASPORTO IN SOMMA.

SPAZIO PRIVATO

INDIVIDUARE LE ESIGENZE, SI È REATO NECESSARIO RETTIFICARE E RIORGANIZZARE GLI SPAZI DI PERTINENZA DEI FABBRICATI, DISTRIBUENDO LO SPAZIO A DISPOSIZIONE, GLI SPAZI PRIVATI POSSONO ASSUMERE A DIVERSE FUNZIONI A SECONDA DELLE PRIORITÀ DELL'UTENTE.



SPAZIO PUBBLICO

IN ASSENZA DI UNO SPAZIO PUBBLICO ATTREZZATO, SI SONO INDIVIDUATE DELLE ZONE CHE, OPPORTUNAMENTE RIQUALIFICATE E RIORGANIZZATE, POSSANO SERVIRE GLI UTENTI DEL QUARTIERE E DELLE ZONE LIMITROFE, SI PRESTERANNO COME DEGLI SPAZI VERSATI A SERVIZIO DELL'INTERA COMUNITÀ.



COSTRUITO

VISTE LE ECCESSIVE SUPERFICIEZIONI CHE STANNO MODIFICANDO L'IDENTITÀ ORIGINARIA DEL QUARTIERE E VISTE LE ESIGENZE DI ALIMENTARE LA CURATURA DELLE SINGOLE UNITÀ IMMOBILIARI, SI È PENSATO DI AGGRAPPARE DEGLI ESOSCHELETRI CHE POTREMMO RISPONDERE A TUTTE O QUASI LE ESIGENZE DEI SINGOLI, PUR NON MODIFICANDO ECCESSIVAMENTE L'ENVISTA.

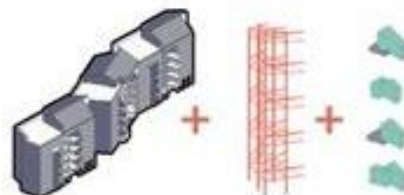


Fig. 2. Functional addition Scenario - © 2020, A. Quattrone.



Fig. 3. Relational addition Scenario - © 2021, E. Dattoli.

DRUM Press, Istanbul, 2023
Printed by Lulu.com Raleigh, NC, USA
2023
Dies Natalis Urbis Romae, MMDCCCLXXIV AVC
ISBN: 978-1-4478-0517-5