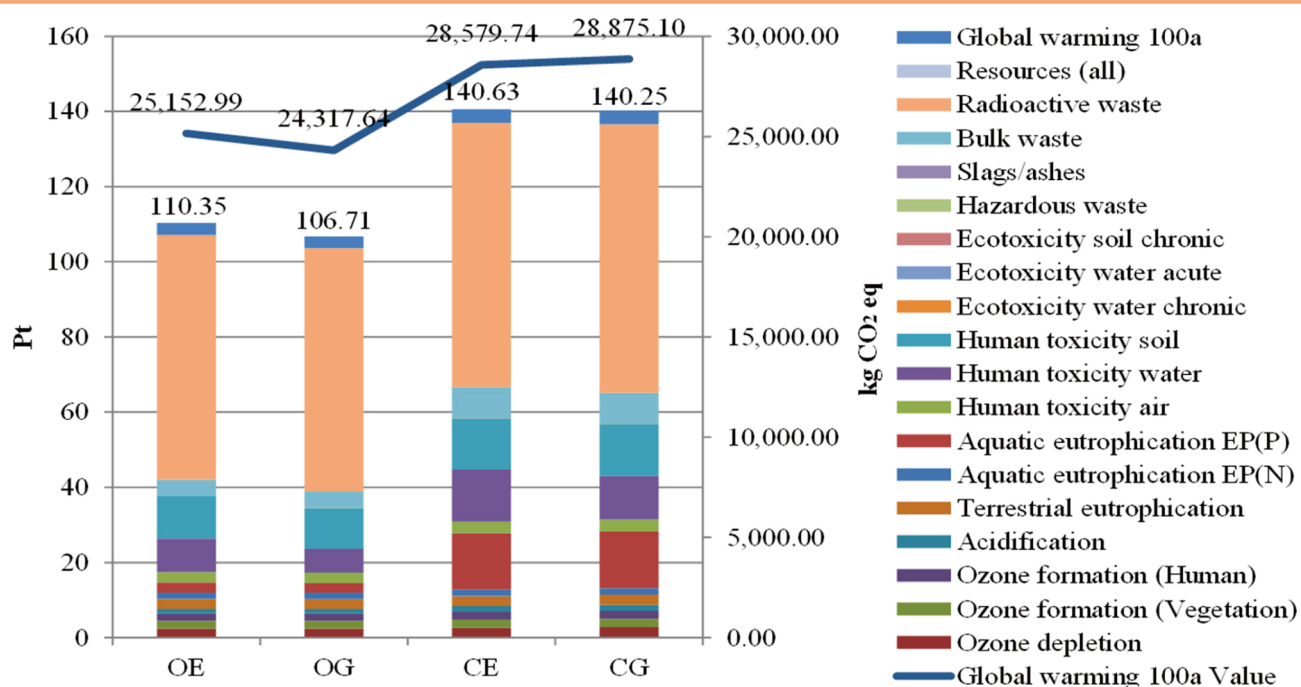
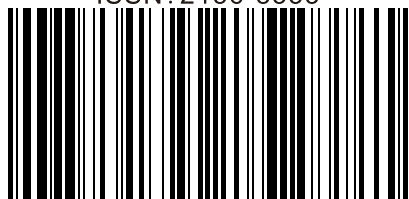




Agricultural Sciences



ISSN: 2156-8553



977215685530405B

TABLE OF CONTENTS

Volume 4, Number 5B, May 2013

Determination of okadaic acid related toxins from shellfish (<i>sinonovacula constricta</i>) by high performance liquid chromatography tandem mass spectrometry	
H.-Q. Zhang, W. C. Liu, X. He, L.-J. Liang, W. Y. Ding, Z.-Y. He.....	1
The effects of ultrasonic irradiation in combination with ozone on the reduction of residual ethion of tangerine (<i>Citrus reticulata</i> Blanco cv. Sai Nam Pung) fruit after harvest	
K. Whangchai, S. Phiyalaninmat, J. Uthaibutra, S. Pengphol, N. Nomura.....	7
Economic and environmental sustainability assessment of wine grape production scenarios in Southern Italy	
A. Strano, A. I. De Luca, G. Falcone, N. Iofrida, T. Stillitano, G. Gulisano.....	12
Slight free falling impact test for assessing guava maturity	
C.-C. Lien, C.-H. Ting.....	21
Biochemical changes during composting of coir pith waste as influenced by different agro industrial wastes	
T. Muthurayar, M. S. Dhanarajan.....	28
Effect of organic fertilizers used in sandy soil on the growth of tomatoes	
Y. X. Hou, X. J. Hu, W. T. Yan, S. H. Zhang, L. B. Niu.....	31
Effect of tillage systems on soil properties, humus and water conservation	
T. Rusu, I. Pacurar, M. Dirja, H. M. Pacurar, I. Oroian, S. A. Cosma, M. Gheres.....	35
Application of ontologies to traceability in the dairy supply chain	
L. Magliulo, L. Genovese, V. Peretti, N. Murru.....	41
Physicochemical and radical scavenging activities of honey samples from Malaysia	
N. L. A-Rahaman, L. S. Chua, M. R. Sarmidi, R. Aziz.....	46
Accumulation of microcystins in water and economic fish in Phayao Lake, and fish ponds along the Ing River tributary in Chiang Rai, Thailand	
N. Whangchai, S. Wanno, R. Gutierrez, K. Kannika, R. Promna, N. Iwami, T. Itayama.....	52
Superabsorbent polymer for water management in forestry	
M. Casquilho, A. Rodrigues, F. Rosa.....	57
Amino acid composition of droughtmaster beef at various beef cuts	
Z. Samicho, S. R. Ab Mutalib, N. Abdullah.....	61
Optimisation of beef tenderisation treated with bromelain using response surface methodology (RSM)	
S. Zainal, K. Z. Nadzirah, A. Noriham, I. Normah.....	65
Physicochemical properties, vitamins, antioxidant activities and amino acid composition of ginger spiced maize snack 'kokoro' enriched with soy flour (a Nigeria based snack)	
F. O. Sade, A. O. Aderonke.....	73
Survival of encapsulated probiotics through spray drying and non-refrigerated storage for animal feeds application	
N. Abd-Talib, S. H. Mohd-Setapar, A. K. Khamis, L. Nian-Yian, R. Aziz.....	78

Omega-3 emulsion of Rubber (*Hevea brasiliensis*) seed oil

S. H. Mohd-Setapar, L. Nian-Yian, W. N. W. Kamarudin, Z. Idham, A.-T. Norfahana.....84

Design parameters for a small- scale batch in-bin maize dryer

F. A. Bola., A. F. Bukola., I. S. Olanrewaju, S. B. Adisa.....90

Thermal properties of some selected nigerian soups

R. A. Olayemi, A. Rahman.....96

Soil water resources use limit in the loess plateau of China

T. Ning, Z. S. Guo, M. Guo, B. Han.....100

Evaluation of pesticide residues in fruit from Poland and health risk assessment

B. Łozowicka, P. Kaczyński, E. Rutkowska, M. Jankowska, I. Hrynko.....106

Effect of heat stress on the MDA, proline and soluble sugar content in leaf lettuce seedlings

Y. Y. Han, S. X. Fan, Q. Zhang, Y. Nan Wang.....112

The development of soy sauce from organic soy bean

S. P. Wan, Y. X. Wu, C. Wang, C. L. Wang, L. H. Hou.....116

Application of resistant starch in bread: processing, proximate composition and sensory quality of functional bread products from wheat flour and African locust bean (*Parkia biglobosa*) flour

A. Sankhon, I. Amadou, W.-R. Yao.....122

Mulberry fruit as an antioxidant component in muesli

J. Kobus-Cisowska, A. Gramza-Michałowska, D. Kmiecik, E. Flaczyk, J. Korczak.....130

Isolation of aromatic yeasts(non-*Saccharomyces cerevisiae*) from Korean traditional *nuruks* and identification of fermentation characteristics

C. J. Ho, S. H. Yeo, J.-H. Park, H. S. Choi, J.-E. Gang, S. I. Kim, S. T. Jeong, S. R. Kim.....136

Chemical characterization and antioxidative properties of Polish variety of *Morus alba* L. leaf aqueous extracts from the laboratory and pilot-scale processes

E. Flaczyk, J. Kobus-Cisowska, M. Przeor, J. Korczak, M. Remiszewski, E. Korbas, M. Buchowski.....141

Economic and environmental sustainability assessment of wine grape production scenarios in Southern Italy

Alfio Strano, Anna Irene De Luca*, Giacomo Falcone, Nathalie Iofrida, Teodora Stillitano, Giovanni Gulisano

Department of AGRARIA, Mediterranean University of Reggio Calabria, Reggio Calabria, Italy;

*Corresponding Author: anna.deluca@unirc.it

Received 2013

ABSTRACT

The low resilience of ecosystems imposes a sustainable management of natural resources through more rational uses, land protection, energy saving and low carbon production technologies. Agriculture has a great responsibility in managing these resources that are the principal inputs of its processes. Production systems must pay attention, at the same time, to economic viability and environmental protection. Since decades, the international scientific community is facing the great challenge of assessing the sustainability of agricultural engineering techniques, in order to help both private and public decision making, but also to meet consumer's requirements for high quality and low impact products. To achieve that, widely accepted assessment instruments, whose results have to be clear and understandable to a broad public, and that are necessary. In this direction, Life Cycle Thinking (LCT) is gaining consensus as conceptual model, considering goods and services production and consumption all along the whole life cycle, from planning to disposal. Its methodological framework, the Life Cycle Management (LCM), offers many standardised tools to assess impacts of products and processes: Life Cycle Assessment (LCA), to evaluate environmental impacts and Life Cycle Costing (LCC) for economic ones. Among many impacts categories LCA also allows to identify the carbon footprint, that can be quantified in terms of Global Warming Potential (GWP). This re-search has analyzed and compared different scenarios of wine grapes production in Cirò, an important viticultural area located in Calabria region (Southern Italy). LCA and LCC methodologies have been useful to assess them from an environmental

and economic standpoint. Results have allowed the authors to rank training and farming systems performances.

Keywords: Life Cycle Assessment (LCA); Life Cycle Costing (LCC); Sustainable agriculture; Decision Making; Global Warming; CO₂ Equivalents

1. INTRODUCTION

Anthropic activities are the principal responsible for the depletion of natural resources, because exploitations are carried out faster than the ability of ecosystems to regenerate themselves. The results are global warming, loss of biodiversity, exhaustion of energy resources, pollution and wastes production that lead, in the long run, to social and economic consequences too. There is a growing interest in knowledge acquisition about how to measure impacts and how to relate them to their causes, such as carbon footprint for global warming and climate change.

The assessment of environmental and economic sustainability relating to a product or a process is a high concern for many stakeholders, e.g. public deciders, farmers, entrepreneurs and consumers.

According to [1], agriculture and food production are one of the principal responsible for environmental impacts and natural resources overexploitation. In this sense, it is preferable to carry out a farm management which combines carbon capture and emissions reduction considering several farming phases like grazing and fertilizing, tillage, crops alternation, harvesting and so on [2].

Today more than ever, new methodological approaches are required for management and decision making to meet consumers' needs for high quality and healthy products, and entrepreneurs' necessity of economic viability, using natural resources rationally.

In this way, Life Cycle Management (LCM) is gaining great consensus as methodological framework helpful to decrease footprints, add value to products (*i.e.* goods or services) or supply chains and improve the sustainability performance of a business or organization.

These tools enable the evaluation of all production phases, “from cradle to grave”, in order to understand how to make them more compatible with environment, economics and society.

The purpose of this study moves from the necessity to know how to use natural resources in a more rational way, and how to farm saving energy, protecting land and reducing carbon footprint.

It is focused on four different productive scenarios in the viticultural area of Cirò, in Calabria region (Southern Italy). Grapevine production has been analyzed from both an economic and environmental standpoint through Life Cycle Costing (LCC) and Life Cycle Assessment (LCA) methodologies.

Results have allowed to make comparisons and to rank performances of each scenario for every field of study. Findings of this study highlighted the possible effectiveness of the joint use of LCA and LCC, and that they can be a useful decision making instrument for both public and private deciders.

2. METHODOLOGICAL BACKGROUND

The widely accepted definition of sustainable development was given by the commonly known Brundtland Report in 1987 “Our common future”, that described it as the “development that meets the needs of the present without compromising the ability of future generations to meet their own needs” [3].

According to this definition, sustainability is achieved through the integration of three interrelated features such as social equity, economic viability and environmental protection. In this sense, global warming and climate change are a high concern that putted the attention to the necessity of low carbon human activities, which main indicator is “carbon footprint” [4] that measures human activities impacts on global climate [5].

A new conceptual model, called Life Cycle Thinking (LCT), has arisen from the necessity to deepen the knowledge about all the impacts (*i.e.* environmental impacts, economic and social ones) that products and services generate during every stage of their life cycle, “from cradle to grave”, or rather, from planning to disposal, taking into account all inputs and outputs of resource and energy [6].

Many methodological tools have been developed to achieve this goal, such as LCA and LCC for environmental and economic sustainability assessment. They belong to a toolbox named LCM, which is the methodological framework that can help public deciders, entre-

preneurs and managers addressing their activities in a more sustainable way. The LCM multidisciplinary approach have been successfully used in food production [7,8], a sector that notoriously has a strong environmental impact and often a low profitability.

2.1. Life Cycle Assessment

The Society of Environmental Toxicology and Chemistry (SETAC) defined LCA as “an objective process to evaluate the environmental burdens associated to a product, a process, or an activity by identifying energy and materials usage and environmental releases, and to evaluate opportunities to achieve environmental improvements” [9].

These improvements can be measured in order to understand which useful changes should be adopted during the life cycle of a product (good or service). The International Organization for Standardization (ISO) has published international standards ISO 14040-14044 about principles, framework and requirements for a correct use of LCA [10,11].

Several categories of impact are taken into account, and among them, climate change is evaluated in terms of Global Warming Potential (GWP), *i.e.* greenhouse gases emissions in CO₂ equivalents, as suggested by the Intergovernmental Panel on Climate Change (IPCC) [12]. It is well known that carbon dioxide, with others greenhouse gases, is responsible for global warming; the overall amount of CO₂ and other greenhouse gas emissions associated to a product along its lifecycle is commonly known as carbon footprint [4], for which LCA provides requirements for performing transparent and widely accepted calculations [12,13]. According to [10,14], the four steps to implement a LCA study are the following:

a) Goal and scope definition. It means defining: field of application, addressees, functions of the object to be assessed, functional equivalent for comparing assertions, system boundaries and procedures of allocation, choice of environmental impact categories and methodologies for their interpretation, data requirements and quality, source, assumptions and limitations, critical review, report format;

b) Life Cycle Inventory (LCI). This second step consists of qualitative and quantitative data collection, calculation of incoming and exiting flows (e.g. energy, materials and emissions) and validation. LCI is an iterative process, so a review of procedures or goals may occur;

c) Life Cycle Impact Assessment (LCIA). It consists of quantifying potential environmental impacts, through three sub-steps: selection of impact categories, category indicators and characterisation models; classification in impact categories; impact measurement by characterisation. Optional analysis-normalisation, grouping and weighting-and evaluation of indicators results reliability

- importance, uncertainty and sensitivity - can be useful;

d) Life cycle interpretation of results. It highlights hot spots and allows formulating conclusions and helpful recommendations for deciders, which is the reason why LCA can be a valuable decision support system.

Regarding the application of LCA to food farming, some examples have been found in literature [15-17] among which empirical studies on viticulture activities, such as wine production, including agricultural phases.

2.2. Life Cycle Costing

At its origins, LCC was an instrument of management accountability to assess investments that did not take into account environmental costs [18,19]. But as sustainability entails managing the integration of different issues (*i.e.* environmental issues, economic and social ones), more specific tools are required to measure and to evaluate both environmental and economic feasibility of changes and renovations that occur during the life cycle of a product [20]. An example is the so-called LCA-type LCC [21] or Environmental LCC, based on the assessment of all kind of costs during life cycle afforded by every involved actor, including long run externalities.

However, to be effective, LCC has to be developed jointly with a LCA, taking into account the same product system, boundaries, and functional unit, in order to obtain a complete assessment of environmental impacts and production costs. It does not exist a specific standard for the joint implementation of LCC and LCA, however, some guidelines can be found in [10,11,22].

According to [23] three conditions have to be defined before starting a LCC analysis: life cycle phases, inventory elements for each phase, environmental effects connected to different impacts. Applying LCC allows to achieve two main goals: adapting costs estimation approaches to relate environmental costs to specific processes and products, and facilitating the identification of best practices to prevent pollution and to reduce wastes.

3. MATERIALS AND METHODS

3.1. Regional Context and Site Description

According to the 6th Italian Agriculture Census [24], vineyard surfaces of Calabria region, in Southern Italy, amount to 9,075.90 hectares (ha), representing 2.4% of the national surface and 34.4% less than 2000.

Concerning farms number, a general negative trend of Italian viticulture is confirmed by regional data: Calabrian vine growing farms were 34,291 in 2000, and 13,390 in 2010, with a reduction of 61%.

In this regional context, the province of Crotone (where the case study is located) counts a vineyard surface of 3,236 ha, that represents the 32.3% of the regional viticultural area. In this province the general decrease of

surface and farms is attenuated. This is consistent with the important role played by viticulture in this province that represents over 70% of the cultivated areas with certificated labels products. In this province, the “Cirò” production area is very significant because its “Protected Designations of Origin” (PDO) wines amounts to 80% of Calabrian production. The research context is located in the above mentioned area (**Figure 1**) and extends along the Ionian coast for about 25 km and inland up to Sila’s mountains.

The area includes the municipalities of Cirò, Cirò Marina and, partly, of Melissa and Crucoli. The orography is rather varied, with a coastal strip at the sea level and the terraced hills at about 300 - 350 m above sea level. Precipitations are mainly distributed in the autumn-winter season, maximum temperatures occur in August requiring the use of emergency irrigation, and soils texture varies from sandy loam to medium texture.

Despite wine production represents a historic activity of great importance within the Cirò area, farms production structures are quite obsolete: grapevines are cultivated with traditional techniques, with low levels of mechanization. Most of the vineyards are conducted with “gobelet” or “espalier” (cordon and Guyot) training systems, which require high levels of labour generating so high production costs. Organic viticulture is very developed and it is characterized by low levels of external inputs in the production cycle, coherently with the procedural guidelines of “Cirò” PDO.

Two cropping systems-organic and conventional-and two training systems-espalier and gobelet-have been identified and therefore, four production scenarios have been studied: “organic-espalier” (OE), “conventional-espalier” (CE), “organic-gobelet” (OG) and “conventional-gobelet” (CG). After analyzing the main technical and economic characteristics, values per area unit

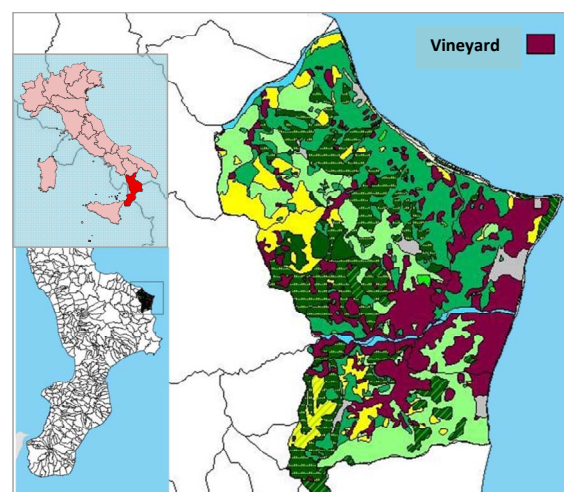


Figure 1. Study area. The Cirò territory in Calabria region (South Italy).

and their relative impacts have been calculated.

3.2. Application of LCA Method to the Case Study

The first phase of the analysis, according to LCA guidelines [10,11], has been the identification and definition of the above mentioned scenarios.

In a second phase, 1 ha of planted surface has been chosen as a “functional unit”, and then system limits have been defined considering production phases “from cradle to gate”, or rather from plantation to wine grapes harvesting, excluding wine processing, distribution and consumption.

Therefore, the considered life cycle goes from vineyard plantation to disposal (25 years). The same life cycle has been object of an economic assessment through the LCC methodology.

Inputs and outputs data related to production have been directly collected from the field. Data on emissions have been obtained from secondary sources; these last data did not correspond exactly to the reality of the analyzed farms, however errors have been systemic and did not affect comparison results.

Data have been collected from a group of 24 ordinary farms with an average surface of about 15 - 20 ha, because of their significance among others.

Techno-economic data of three growing seasons - 2009, 2010 and 2011 - have been collected and considered in order to reduce the uncertainty degree connected to seasonality and subjectivity of farms management, but also to attenuate production fluctuations and other external factors that could have influenced plants productivity.

Therefore, for each farm, average values per hectare have been processed. To identify analytically all inputs and outputs, both environmental and economic ones, a specific questionnaire has been arranged.

In addition to general questions about the farm, it has also included specific questions on inputs quantities and prices, as well as the obtained yields. For the analyzed three-year period, the following factors have been considered: fuel consumption, for each technical operation; water consumption required for rescue irrigation; modality of water distribution and related energy consumptions; quantity, type, period and distribution modality of pesticides; wastes disposal modality.

In order to adopt the LCA method, collected data have been processed and grouped into macro categories as shown in **Table 1**.

Inventory data were processed using SimaPro 7.2 software, Eco-invent V. 2.0 database and Eco-indicator method to elaborate each scenario. At a latter time, data have been processed with an additional method, EDIP 2003 (Environmental Design of Industrial Products), in order to compare the LCA results and to focus the GWP

impact of the four considered scenarios, and so pointing out the carbon footprint.

3.3. Application of LCC Method to the Case Study

In order to implement an economic analysis the LCC method has been used, considering farm labour remuneration, land and working capital [25].

In this way, it has been possible to realize an inventory costs complementary to LCA inventory [18], as established in [10].

The same parameters and life cycle described in the previous paragraph has been considered for LCC implementation. Each input and output considered in LCA analysis (*i.e.* inventory data) has been transformed in monetary values by multiplying the average quantity (of the three year period) by the unit price related to the last year of production.

In order to reach the total cost of every single process, all other costs associated to the inputs (e.g. those costs afforded for labour, disposal, etc.) have been considered. Furthermore, fixed costs linked to the overall production process (e.g., shares of insurance, taxes, etc.) have been considered for each production phase.

Obtained data have been used to perform an investments analysis, and so assessing the overall life cycle cost through appropriate financial indices: the Net Present Value (NPV) and the Internal Rate of Return (IRR)¹.

Table 1. Scheme for LCA data collection.

Considered elements	Measurement unit	Description
Fuel consumption	l/ha/year	Fuel consumptions per single farming operation
Water consumption	m ³ /ha/ year	Water consumptions per irrigation operation and pesticides distribution
Fertilisation	kg/ha/year	Quantities of fertilizers considering titrations of nutritive elements
Pesticides treatments	kg/ha/year	Active principles distributed
Electricity	kW/ha/year	Energy consumption per farming operation
Wastes	kg/ha/year	Wastes per farming cycle in terms of High-density polyethylene (HDPE) disposal (crates, packaging materials, bottles)
Yield	t/ha/year	Average of wine grapes produced

Source:[25].

¹Net Present Value (NPV) expresses the sum total of an investment's discounted future cash flows. Internal Rate of Return (IRR) is a rate of return used to measure and compare the profitability of investments.

These parameters take into account the economic and financial trend of investment during the whole life cycle. A discounting rate of 1.8% has been applied, considering the low risk and long-lasting nature of agricultural investments. The average inflation rate has not been considered, in order to reduce the degree of results uncertainty. All cash flows have been discounted through the following **Eq.1**:

$$Pl_{TH}^0 C = Pl_0 DsC + Pl_0 InC + \sum_{j=1}^{m1} \frac{TrPl_j C}{(1+r)^j} + \sum_{j=1}^{m2} \frac{PgrPl_j C}{(1+r)^j} + \sum_{j=1}^{m3} \frac{PkPl_j C}{(1+r)^j} + \sum_{j=1}^{m4} \frac{PdcPl_j C}{(1+r)^j} + \frac{UdPl_{25}}{(1+r)^{25}} \quad (1)$$

where

TH = Time Horizon (25 years);

$Pl_0 C$ = Discounted total Cost of Planting;

$Pl_0 DsC$ = Planting Design Cost;

$Pl_0 InC$ = Planting Installation Cost;

$\sum_{j=1}^{m1} \frac{TrPl_j C}{(1+r)^j}$ = Discounted Training System Cost (from

the 1st to the 3rd year);

$\sum_{j=1}^{m2} \frac{PgrPl_j C}{(1+r)^j}$ = Discounted Production Cost - growing

phase (from the 4th to the 7th year);

$\sum_{j=1}^{m3} \frac{PkPl_j C}{(1+r)^j}$ = Discounted Production Cost-constant

phase (from the 8th to the 22nd year);

$\sum_{j=1}^{m4} \frac{PdcPl_j C}{(1+r)^j}$ = Discounted Production Cost - decreas-

ing phase (from the 23rd to the 25th year);

$\frac{UdPl_{25}}{(1+r)^{25}}$ = Discounted Useful for disposal (25th year).

The discounted costs were obtained through the following equations (**Eq.2** and **Eq.3**):

$$NPV = B_0 - C_0 \quad (2)$$

$$IRR = B_0 - C_0 = 0 \quad (3)$$

where:

$$B_0 = \sum_{j=0}^n \frac{b_j}{(1+r)^j} = \text{Value of actual benefits};$$

$$C_0 = \sum_{j=0}^n \frac{c_j}{(1+r)^j} = \text{Value of actual costs};$$

$n = TH = 25$ years.

LCA and LCC results have been compared in performances rankings in order to assess the environmental and economic sustainability of each scenario.

4. DISCUSSION OF RESULTS AND CONCLUSIONS

Results did not enable authors asserting which is, in absolute, the most sustainable scenario among those assessed, but they allow to make comparisons. Through the implementation of LCA, Eco-indicator 99 method has allowed modelling inventory data into impacts categories and then evaluating impacts - as balance of positive and negative ones.

Results (**Figure 2**) has shown that, in average, the

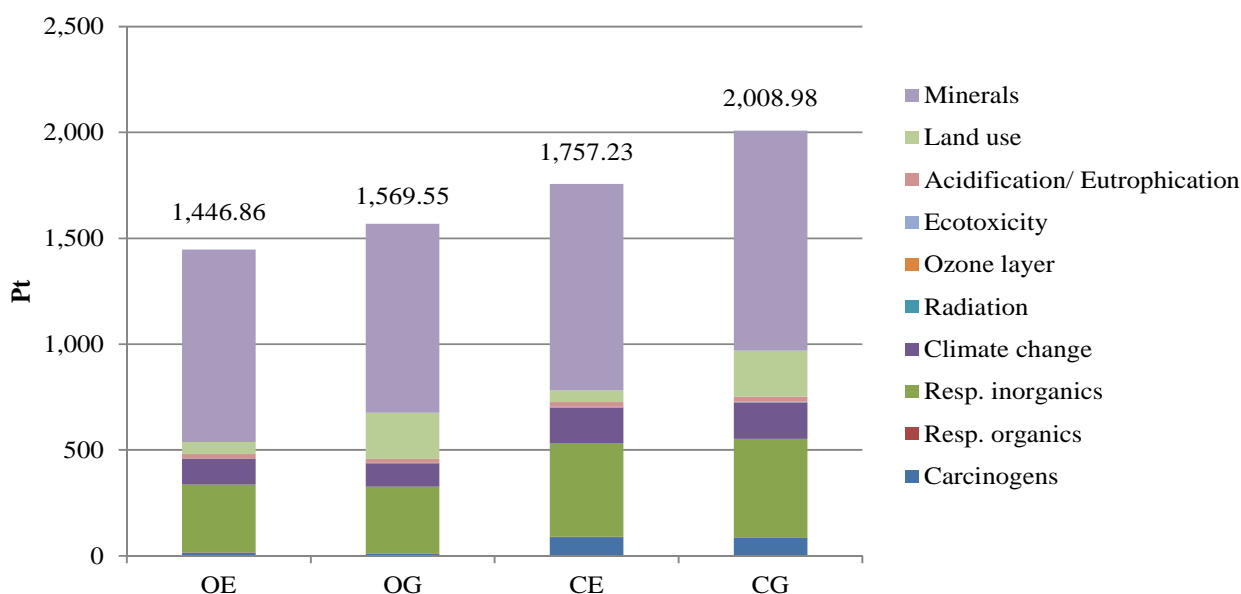


Figure 2. LCA results - Eco-indicator 99 Single score per impacts categories.

most sustainable scenario is “OE” with 1,446.86 Ecopoints, and the worst performing one is “CG” scenario with 2,008.98 Ecopoints. The gap between them amount to 38.9%. Regarding life cycle phases, and taking into account the duration of each one, in all cases the most affecting ones are the “planting” (the year zero) and the “constant production” phase (from the 8th to the 22nd year), imputable to “minerals”, “land use” and “carcinogens” categories because of the use of fertilizers, pesticides and machines.

EDIP methodology (Figure 3), that includes global warming assessment, has shown that the best performing scenario is “OG” with 106.71 Ecopoints, and the worst one is “CE” scenario with 140.63 Ecopoints; the gap between them amount to 31.8%. These impacts are imputable to the following categories, ranked from the most impacting: “Radioactive waste”, “Aquatic eutrophication EP(N)”, “Aquatic eutrophication EP(P)”, “Human toxicity water”, “Human toxicity soil” and “Bulk waste”. These categories of impacts refer to the use of chemicals and machines, especially in “planting” and “farming” (from the 1st to the 3rd year) phases.

The comparison between obtained environmental results using Eco-indicator 99 and EDIP highlights that organic cropping system is the best in both cases.

In Figure 3, Global Warming Potential (kg of CO₂ equivalents) has been highlighted, showing that “OG” scenario produces less emissions (24,317.64 kg of CO₂ eq.), while “CG” scenario produces more emissions (28,875.10 kg of CO₂ eq.), 18.7% more than the first one.

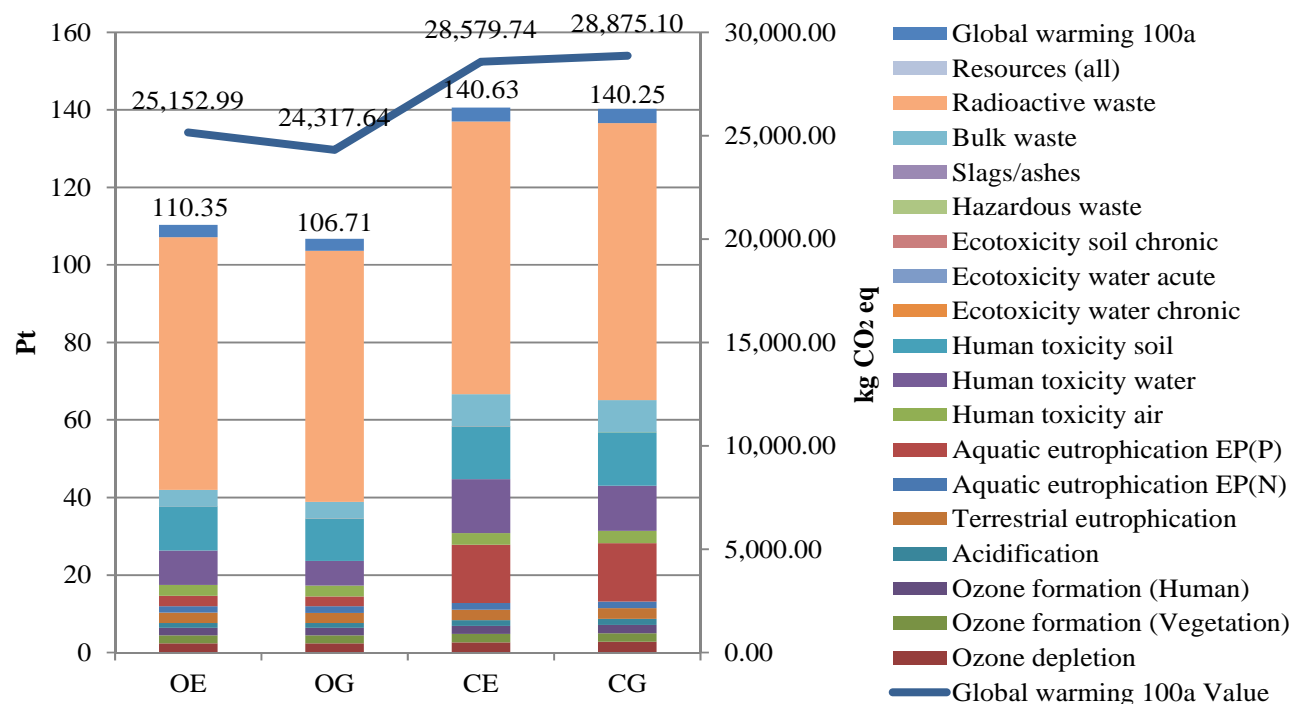


Figure 3. LCA results - EDIP 2003 Single score per impacts categories (Pt) and GWP100a Values (kg of CO₂ eq.).

Concerning the implementation of LCC methodology to assess economic performances, Figure 4 shows life cycle discounted costs: “OE” is the best performing scenario, amounting to 80,257.45 Euro, while the worse one is the “CG” scenario with an amount of 87,476.18 Euro, a 9% more than the first one. Financial indicators to analyze profitability of investments, *i.e.* NPV and the IRR, have been calculated for each scenario; they have shown that “CE” scenario is the most economically advantageous one, with a NPV of 24,274.27 € and an IRR of 6.6%, followed by “OE”, “CG” and “OG” scenarios (Figure 4). The difference between “CE” and “OG” scenarios amount to 51.5% in terms of IRR and to 76.9% in terms of NPV.

It is also necessary specifying that these last results have taken into consideration European subsidies to farming, without which only investments for the “CE” scenario would have been profitable.

The relative gaps (in percentage) between each scenario performances are shown in Graphic 4, allowing a visualization of both environmental and economical results. A percentage of 100% has been given to the best performing scenario, or rather, the most sustainable among the others.

Greater performance differences between scenarios are evident, above all, in Eco-indicator 99, in NPV and IRR values. “CG” and “CE” scenarios are nearly always the worst performing: this occurs in terms of environmental damages for all indicators and in terms of discounted costs.

Concerning NPV and IRR values, there is a great difference between the best performing scenario, “CE”, and the others, with a relative gap between the best and the worst (“OG”) of about a 76.9% in terms of NPV, and about a 51.5% in terms of IRR.

In spite of the impossibility of an integrated assessment, comparisons in terms of “percentage distance” of each scenario from the best one (**Figure 5**) have highlighted some valuable information.

LCA results indicate organic growing systems (“OE” and “OG”) as those best performing in environmental terms, with very few differences on gaps’ averages. LCC results have shown that the espalier training systems are the most economically viable, with a difference between gaps’ averages of 24.37 percentage points (p.p.) between “CE” (the best in terms of average results’ LCC) and

“OE” scenario.

Concluding, on average, “OE” scenario is the most environmentally performing and the “CE” is the most economically viable; differences between their average performance values are similar, corresponding to 21.31 p.p. in terms of environmental performances, and 24.37 p.p. in terms of economic ones.

Results did not allow to assert which is the best sustainable scenario in absolute, because further analysis should be necessary in order to assess trade-offs between all concerns, considering also social ones. However, LCA and LCC methodologies are useful tools for decision making, as they can help deciders (farmers, politicians and consumers) to understand what they are choosing within their actions, how to identify hot points of their operation phases and where interventions on processes are necessary.

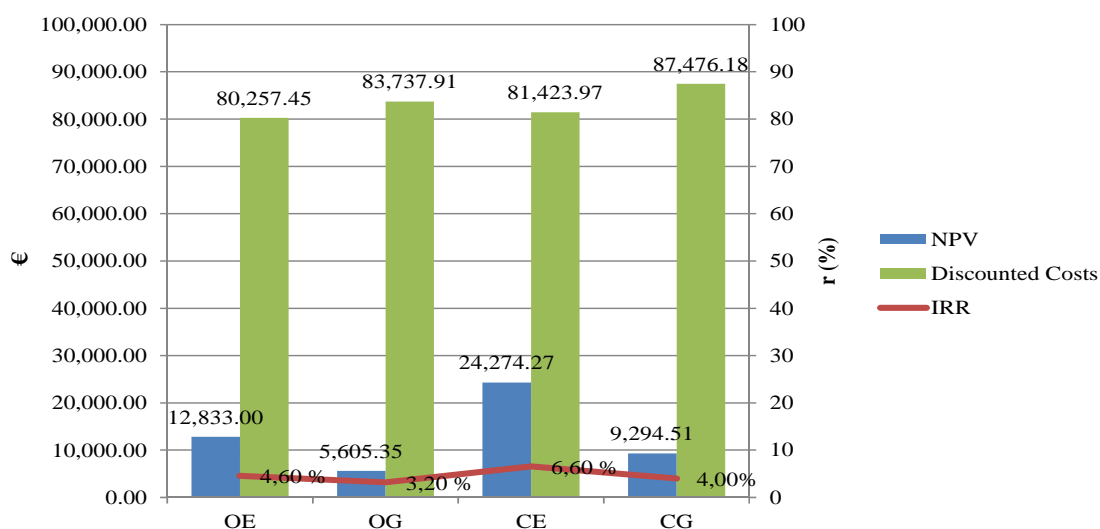


Figure 4. LCC results - NPV and Discounted Costs (€); IRR (%).

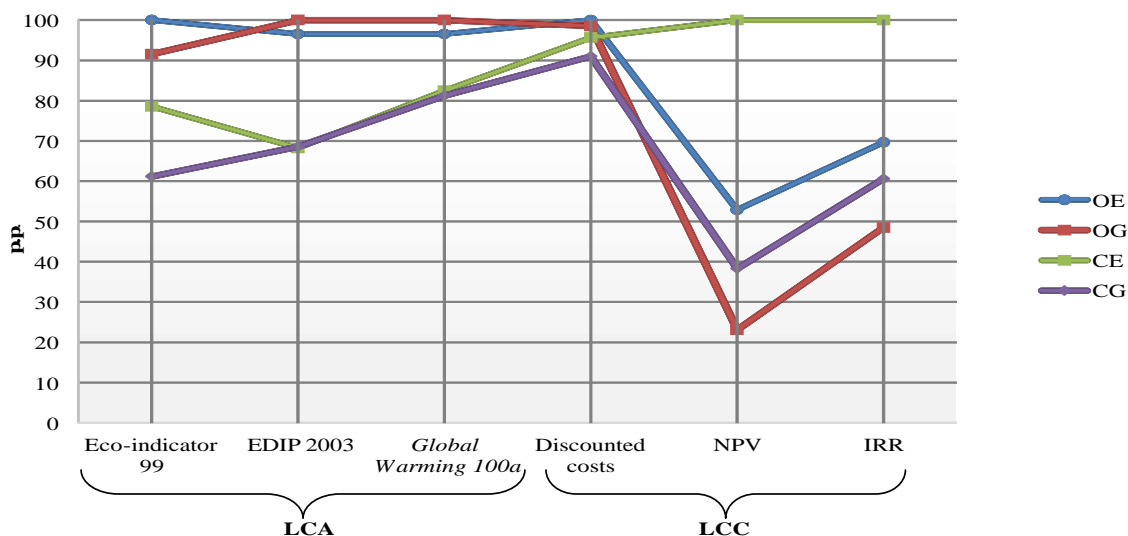


Figure 5. Comparison of gaps between scenarios.

This deepened knowledge about the consequences of human activities permits to focus possible improvements on sustainability performances, reducing impacts on the environment and make farming more economically viable.

5. ACKNOWLEDGEMENTS

This work is a part of the “Agreement Framework Program” - Action 3 “Caparra & Siciliani” Research Project carried out by the Department of AGRARIA (Mediterranean University of Reggio Calabria) and supported by the Regional Authority of Calabria (Italy).

REFERENCES

- [1] Gaillard, G., Nemecek, T. (2009) 6th International conference on lca in the agri-food sector. *The International Journal of Life Cycle Assessment*, **14**, 687-689. doi: 10.1007/s11367-009-0121-5.
- [2] Khan, S., Hanjra, M. A. (2009) Footprints of water and energy inputs in food production - global perspectives, *Food Policy*, **34**, 130-140. doi:10.1016/j.foodpol.2008.09.001.
- [3] WCED (1987) Report of the world commission on environment and development: our common future, Oxford University Press.
- [4] Wiedmann, T., Minx, J. (2010) A definition of “carbon footprint”. Research and consulting-ISA^{UK} Research Report 07-01.
- [5] Luciani, R., Masoni, P. and Santino, D. (2011) Indicatori di sostenibilità ambientale: la carbon footprint. *Energia, Ambiente e Innovazione*, **3**.
- [6] Guinée, J.B. (2002) Handbook on life cycle assessment - Operational guide to the ISO standards, Kluwer Academic Publishers.
- [7] Saling, P., Rether, J. and Gipmans, M. (2010) Measuring sustainability in the agri-food sector: BASF's eco-efficiency and SEEBALANCE analysis, in Notarnicola, B., Settanni, E., Tassielli, G.; Giungato, P. (Eds.) *Proceedings of LCAFOOD 2010 VII International conference on life cycle assessment in the agri-food sector*, Bari.
- [8] De Gennaro, B., Notarnicola, B., Roselli, L. and Tassielli, G. (2012) Innovative olive-growing models: an economic and environmental assessment. *Journal of Cleaner Production*, **28**, 70-80. doi: 10.1016/j.jclepro.2011.11.004
- [9] SETAC (1991) A technical framework for [product] life-cycle assessments. Held in Smuggler's Notch, Vermont, USA.
- [10] ISO (2006) ISO 14040:2006 Environmental management - Life Cycle Assessment - Principles and framework, International Organization for Standardization (ISO), Geneva.
- [11] ISO (2006) ISO 14044:2006 Environmental management - Life Cycle Assessment - Requirements and guidelines, International Organization for Standardization (ISO), Geneva.
- [12] European Commission (2007) Carbon footprint - what it is and how to measure it. <http://lct.jrc.ec.europa.eu/pdf-directory/Carbon-footprint.pdf>.
- [13] Pandey, D., Agrawal, M. and Pandey, J.S., (2011) Carbon footprint: current methods of estimation. *Environmental Monitoring and Assessment*, **178**, 135-160. doi:10.1007/s10661-010-1678-y.
- [14] Horne, R., Grant, T., Verghese, K. (2009) Life Cycle Assessment. Principles, Practice and Prospects. CSIRO Publishing.
- [15] Sanjuan, N., Ubeda, L., Clemente, G., Mulet, A., Girona, F., (2005) LCA of integrated orange production in the comunidad valenciana (spain) *International Journal of Agricultural Resources, Governance and Ecology*, **4**, 163. doi:10.1504/IJARGE.2005.007198.
- [16] Mila` i Canals, L., Burnip, G.M. and Cowell, S.J.(2006), Evaluation of the environmental impacts of apple production using Life Cycle Assessment (LCA): Case study in New Zealand Agriculture. *Ecosystems and Environment*, **114**, 226-238. doi:10.1016/j.agee.2005.10.023.
- [17] Poritosh, R., Daisuke, N., Takairo, O., Qingyi, X., Hiroshi, O., Nobutaka, N. and Takeo, S. (2009) A Review Of Life Cycle Assessment (LCA) On Some Food Products, *Journal Of Food Engineering*, **90**, 1-10. doi:10.1016/j.jfoodeng.2008.06.016.
- [18] Notarnicola, B., Settanni, E. and Tassielli, G., (2009) Approcci all'integrazione dei costi in LCA: life cycle costing, analisi input-output, in Cappellaro, F., Scalbi, S., (Eds.) *Atti del Convegno Scientifico della Rete Italiana LCA*, Palermo.
- [19] Gluch, P. and Baumann, H. (2004) The life cycle costing (LCC) approach: a conceptual discussion of its usefulness for environmental decision-making. *Building and Environment*, **39**, 571-580. doi:10.1016/j.buildenv.2003.10.008.
- [20] Rebitzer, G. and Hunkeler, D. (2003) Life cycle costing in lcm: ambitions, opportunities and limitations. *The International Journal of Life Cycle Assessment*, **8**, 253-256. doi:10.1007/BF02978913.
- [21] Huppes, G., van Rooijen, M., Kleijn, R., Heijungs, R., de Koning, A. and van Oers, L. (2004) Life cycle costing and the environment. Report of a project commissioned by the Ministry of VROM-DGM for the RIVM Expertise Centre LCA.
- [22] Lichtenvort, K., Rebitzer, G., Huppes, G., Ciroth, A., Seuring, S., Schmidt, W.-P., Günther, E., Hoppe, H., Swarr, T. and Hunkeler, D. (2008) History of life cycle costing, its categorization, and its basic framework, in Hunkeler, D., Lichtenvort, K. and Rebitzer G. (Eds.) *Environmental life cycle costing*, SETAC-CRC.
- [23] White, A.L., Savage, D. and Shapiro, K., (1996). Life Cycle Costing: concept and applications, in Curran M.A. (Eds.), *Environmental Life Cycle Assessment*, Mc Graw Hill.
- [24] ISTAT (2012) 6th Italian Agriculture Census. <http://www.istat.it/it/censimento-agricoltura/agricoltura-2010> (accessed on February 2012).

- [25] Pirilli, M., Falcone, G. and Strano, A. (2012) La formazione dell'inventario per l'LCA nei confronti fra processi produttivi agricoli nella clementinicoltura in Calabria, in Scalbi, S., Dominici Loprieno, A., (Eds.) *Atti del VI Convegno della Rete Italiana LCA - Dall'Analisi del Ciclo di Vita all'impronta Ambientale*, Bari.